

Name:

Griven Boarding Pod

Type: Griven Empire Boarding Pod

Scale: Starfighter

Length: 18m

Skill: Space Transports - Griven Boarding Pod

Crew: 1

Crew Skill: Space Transports 5D, Starship

Shields 4D, Starship Sensors 4D

Passengers: 50

Consumables: 2 Days

Cargo Capacity: 2 Tonnes

Hyperdrive Multiplier: No

Hyperdrive Backup: No

Nav Computer: N/A

Space: 4

Atmosphere: 225;800kmh

Maneuverability: 4D

Hull: 4D

Shields: 1D

Sensors:

Passive: 15/0D

Scan: 30/1D

Search: 45/2D

Focus: 2/4D

Weapons:

Cutting Laser

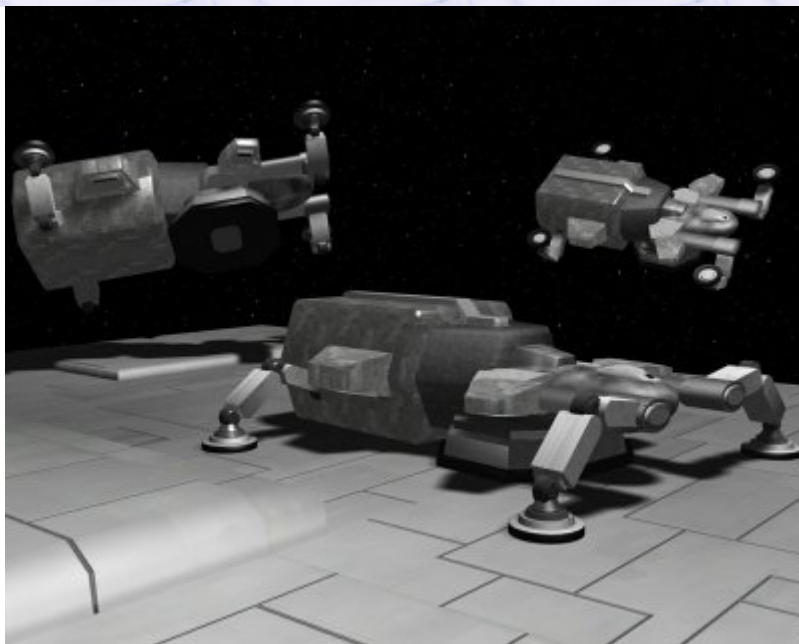
Fire Arc: Bottom

Fire Control: 4D

Space: 1

Atmosphere Range: 1-5/15/25m

Damage: 5D



Description: The Griven Boarding Pod is a vessel used by the Griven Empire to board and capture vessels, although not much more than a passenger compartment with a cutting laser and small engine, this vessel has had a high level of success. The Pods are used against vessels already damaged, preferably disarmed and drifting, they attach to the vessels hull and begin cutting through the hull to allow their complement of troopers board the enemy vessel and seize control of it. In this way the Griven have captured a number of capital ships and their technology, as well as capturing cargo and supplies

boosting the riches of their empire. These poorly armed and slow transport pods are very manueverable however, leading to a good chance that they will avoid enemy and manage to deliver their troops.

---

Page designed in Notepad, logo`s done on Personal Paint on the Amiga.

Text completely by FreddyB. Image is by "Bob the Dinosaur", copyright resides with him.

Any complaints, writs for copyright abuse, etc should be addressed to the Webmaster [FreddyB.](#)