

Name:

Protege Class Cruiser

Type: Rothana Heavy Engineering Protege

Class Trans-Galactic Cruiser

Scale: Capital

Length: 800 Meters

Skill: Capital Ship Piloting: Protege

Crew: 6390; Gunners: 80, Skeleton Crew: 2000/+10

Crew Skill: Astrogation 4D+1, Capital Ship

Piloting 5D+2, Capital Ship Shields 4D+1,

Capital Ship Gunnery 5D+2, Sensors 5D

Passengers: 2000 (Troops)

Cargo Capacity: 20,000 Tons

Consumables: 2 Years

Cost: Not available for sale

Hyperdrive Multiplier: X3

Hyperdrive Backup: X12

Nav Computer: Yes

Maneuverability: 0D+1

Space: 4

Atmosphere: 300;850kmh

Hull: 5D

Shields: 2D

Sensors:

Passive: 40/0D

Scan: 60/2D

Search: 140/3D

Focus: 3/4D

Weapons:

16 Quad Turbolaser Batteries (Fire Separately)

Scale: Capital

Fire Arc: 8 Front/Left, 8 Front/Right

Skill: Capital Ship Gunnery

Fire Control: 2D

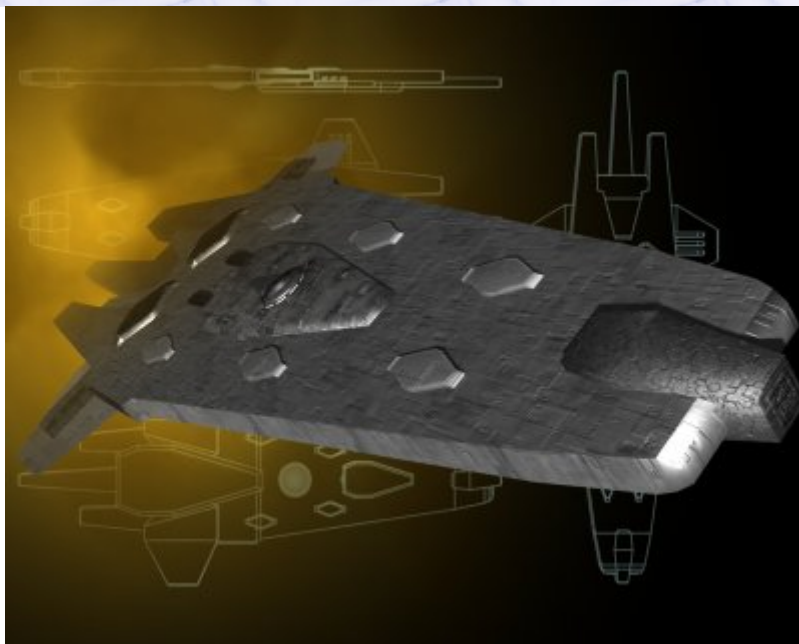
Space Range: 3-15/36/75

Planetary Range: 6-30/72/150 Km

Damage: 6D

28 Laser Cannons

Scale: Starfighter



Fire Arc: 11 Front/Left, 11 Front/Right, 6 Back

Skill: Starship Gunnery

Fire Control: 1D

Space Range: 1-3/12/25

Planetary Range: 2-6/24/50 Km

Damage: 4D

24 Missile Tubes

Scale: Capital

Fire Arc: 12 Front, 12 Back

Skill: Capital Ship Gunnery

Fire Control: 2D+2

Space Range: 1-10/25/50

Planetary Range: 2-20/50/100 km

Damage: 7D

Description: The Protege Class Cruiser was Rothana Heavy Engineering's answer to the Star Destroyer, a massive well armed starship capable of taking on the best that the Confederation could throw at them. However the Protege is a slightly smaller and weaker vessel, which is considerably slower as well, making it vulnerable to being outmaneuvered. So although the Protege is better armed, it has a history of poor performance in battle leading to the Republic buying very few of these vessels, which in turn led to the further development of the Star Destroyer line of vessels which eventually became such a signature for the Galactic Empire. However the Protege itself is still a fine vessel, and the excess vessels from the Republic were sold off to a number of planetary governments, who liked these powerful vessels and the availability of spare parts from the very similar and compatible Acclamator Class Transports. The Rebellion was given some Protege's by worlds pledging their allegiance, but could never muster enough manpower to fully operate these vessels, so they remained unoperational until the New Republic was founded and manpower became less of an issue.

Page designed in Notepad, logo`s done on Personal Paint on the Amiga.

Text completely by FreddyB. Image is by "Bob the Dinosaur", copyright resides with him.

Any complaints, writs for copyright abuse, etc should be addressed to the Webmaster [FreddyB.](#)