

Name: Nu-class attack shuttle

Type: Cygnus Spaceworks Nu-class attack shuttle

Scale: Starfighter

Length: 18.9 Meters

Skill: Space Transports - Nu-class attack shuttle

Crew: 1, gunners 1

Passengers: 30

Crew Skill: Space Transports 5D, Starship Gunnery 4D+2, Starship Shields 4D

Consumables: 2 days

Cargo Capacity: 2 Tons (without passengers)

Hyperdrive Multiplier: X1

Hyperdrive Backup: /

Nav Computer: Yes

Space: 5

Atmosphere: 295;850kmh

Maneuverability: 0D+2

Hull: 3D

Shields: 1D+1

Sensors:

Passive: 10/0D

Scan: 25/1D

Search: 45/2D

Focus: 2/3D

Weapons:

3 x Medium laser cannons

Fire Arc: 2 x Front, 1 x Back

Fire Control: 1D

Space: 1-3/12/25

Atmosphere Range: 100-300/1.2/2.5km

Damage: 4D

2 x Twin Laser Cannon Turrets

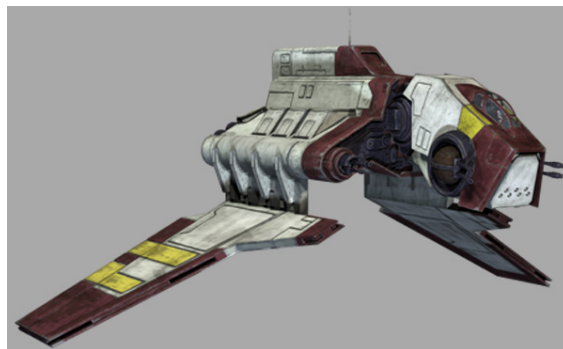
Fire Arc: Turret

Fire Control: 2D

Space: 1-3/12/25

Atmosphere Range: 100-300/1.2/2.5km

Damage: 3D+1



Description: The Nu-class attack shuttle was a vessel used by the Grand Army of the Republic during the Clone Wars. It was designed with fold-down wings, similar to fighters like the V-19 Torrent and later

shuttle designs like the Theta-class and Lambda-class. A shuttle of this kind delivered Ahsoka Tano to Christophsis during a heavy battle there. The 212th Attack Battalion were known to use these attack shuttles.

---

Page designed in Notepad, Logo`s done in Personal Paint on the Commodore Amiga

All text from Wookieepedia, Stats by FreddyB, HTML and logos done by FreddyB

Image is copyright LucasArts, from "The Clone Wars".

Any complaints, writs for copyright abuse, etc should be addressed to the Webmaster [FreddyB](#).