

Name: Nu-class attack shuttle

Type: Cygnus Spaceworks Nu-Class Attack shuttle

Scale: Starfighter

Length: 25 Meters

Skill: Space Transports - Nu-Class Attack shuttle

Crew: 1, gunners 1

Passengers: 30

Crew Skill: Space Transports 5D, Starship Gunnery 4D+2, Starship Shields 4D

Consumables: 2 Days

Cargo Capacity: 2 Tons

Hyperdrive Multiplier: X1

Hyperdrive Backup: X10

Nav Computer: Yes

Space: 5

Atmosphere: 295;850kmh

Maneuverability: 2D

Hull: 3D+2

Shields: 1D

Sensors:

Passive: 10/0D

Scan: 20/1D

Search: 40/2D

Focus: 2/2D+2

Weapons:

2x Medium Laser Cannons

Fire Arc: Front

Fire Control: 1D+2

Space: 1-3/12/25

Atmosphere Range: 100-300/1.2/2.5km

Damage: 4D

2x Double Light Laser Cannons

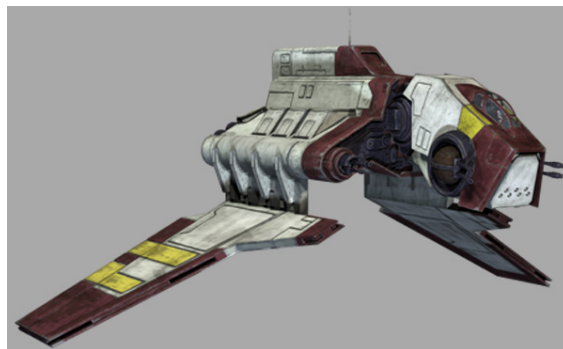
Fire Arc: Front

Fire Control: 2D

Space: 1-3/12/25

Atmosphere Range: 100-300/1.2/2.5km

Damage: 3D



Description: The Nu-class attack shuttle was a vessel used by the Grand Army of the Republic during the Clone Wars.

The Nu-class was a faster, long-range supplement design to the standard LAAT gunship. The class had heavier armor and shielding than most atmospheric craft. However, the LAAT remained somewhat competitive with the Nu: while the shuttle could only carry 30 Clone troopers, the LAAT/i could carry that and four speeder bikes in addition. The shuttle also lacked the missile launchers of the LAAT/i. As a result, it wasn't a complete replacement for the "larty". It was designed with fold-down wings, similar to fighters like the V-19 Torrent and later shuttle designs like the Theta-class and Lambda-class. Its boarding hatch was in its "chin".

A shuttle of this kind delivered Ahsoka Tano to Christophsis during a heavy battle there. Commander Cody and Captain Rex flew the Nu-class shuttle Obex as a transport while conducting an inspection tour of Republic outposts staffed with rookie troops. When they landed at the listening post on the Rishi moon, their shuttle was destroyed by Confederacy droid commandos.

Another Nu-class shuttle delivered Nahdar Vebb and a small squad of clone troopers to Vassek during the mission to recapture Nute Gunray. After stumbling into General Grievous's castle, Jedi Master Kit Fisto ordered the clones to call in for reinforcements using the shuttle's transceiver, but it was destroyed by MagnaGuards.

A Nu-class shuttle was used on a diplomatic mission by Commander CC-5869, his troops, Jar Jar Binks, and Senator Kharrus, who were en route to Florrum to the Weequay pirates' lair with a bounty of spice on board as a ransom for Dooku. While entering Florrum's atmosphere, they were shot down by the pirates. Kharrus died in the crash along with the two pilots. The shuttle was unable to take off again because it was broken in two.

A Nu-class shuttle was used to transport Anakin Skywalker's escape pod after he destroyed the leading ship blockading Ryloth with the Defender.

---

Page designed in Notepad, Logo`s done in Personal Paint on the Commodore Amiga

All text from Wookieepedia, Stats by FreddyB, HTML and logos done by FreddyB

Images stolen from an unknown website at some remote time in the past.

Any complaints, writs for copyright abuse, etc should be addressed to the Webmaster [FreddyB](#).