

Name: PVC Aten

Type: Parliamentary Vasudan Alliance Aten Class Cruiser

Scale: Capital

Length: 230 Meters

Skill: Capital Ship Piloting: Aten

Crew: 515, gunners 30, skeleton 200/ +20

Passengers/Troops: 150

Crew Skill: Capital Ship Piloting 5D+1, Capital Ship Gunnery 4D+2, Capital Ship Shields 4D+1

Consumables: 1 Year

Cargo Capacity: 400 Tons

Hyperdrive Multiplier: X1

Hyperdrive Backup: X6

Nav Computer: Yes

Space: 5

Maneuverability: 1D

Hull: 5D

Shields: 0D

Sensors:

Passive: 25/1D

Scan: 50/3D

Search: 100/4D

Focus: 3/4D+2

Fighters: 0

Transports: 1

Weapons:

2 Medium Laser Cannon Turrets

Scale: StarFighter

Fire Arc: 1 Front/Left, 1 Front/Right

Fire Control: 3D

Space: 1-5/15/30

Atmosphere Range: 100-500/1.5/3km

Damage: 5D

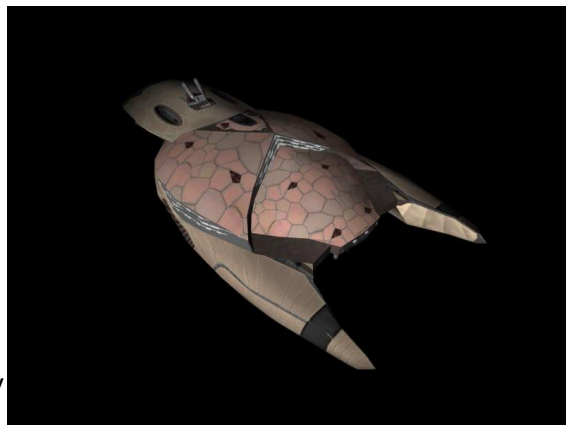
2 Heavy Laser Cannon Batteries

Scale: Capital

Fire Arc: 1 Front, 1 Back

Fire Control: 3D

Space: 1-5/15/30



Atmosphere Range: 100-500/1.5/3km

Damage: 5D

2 TurboLaser Batteries

Scale: Capital

Fire Arc: 1 Front/Left, 1 Front/Right

Fire Control: 4D

Space: 3-15/36/75

Atmosphere Range: 6-30/36/150km

Damage: 6D

Description: The Aten class cruiser, while far stronger than most of the Vasudans warships, falls short as a attack cruiser. It does not have the armor or the firepower to stand up to GTA weaponry. With a cruiser speed of 25 m/s and only six weapon turrets, the Aten just cannot muster the kind of firepower needed to do real damage to targets of size. Most GTA pilots have learned to exploit the primary weakness of the Aten: its extremely weak weapons subsystem. The Aten class cruiser is considered by the GTA to be a Class B threat.

---

Page designed in Notepad, Logo`s done in Personal Paint on the Commodore Amiga

All text from Conflict: Freespace, Stats, HTML and logos done by FreddyB

Images stolen from Conflict:Freespace by Volition.

Any complaints, writs for copyright abuse, etc should be addressed to the Webmaster [FreddyB](#).