

GTW-43 Leech Cannon

The Leech Cannon depletes the power supply of enemy fighters. Use it to disable afterburners, energy weapons, and shields. No subsystems targeting is required, just point and shoot.

The Leech Cannon is an anti-fighter weapon with minimal effect against larger vessels.

Model: GTW-43 Leech Cannon

Type: Anti Energy Blaster

Scale: Starfighter

Skill: Starship Gunnery

Cost: 6,000

Fire Rate: 1

Fire Control: 1D+1

Space Range: 1-3/5/9

Atmosphere Range: 100-300/500/900

Damage: 1D

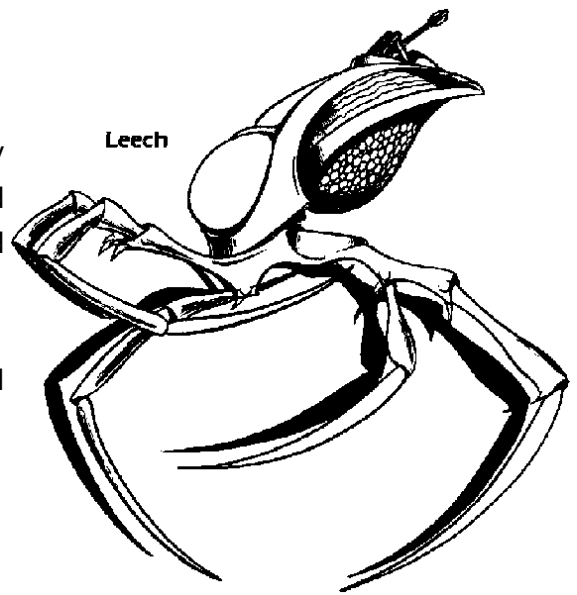
Game Notes: Each hit from a Leech Cannon drains power from systems, roll 1D/6 on the following chart and apply the effects.

1/2 = Speed -1

3 = Manueverability -1d

4/5 = Sheilds -1d

6 = Energy Weapon Damage -1d



Page designed in Notepad, Logo's done in Personal Paint on the Commodore Amiga

All text from Freespace 2, HTML and logos done by FreddyB

Images stolen from Freespace 2, copyright Volition.

Any complaints, writs for copyright abuse, etc should be addressed to the Webmaster [FreddyB](#).