

Name: Corellian Engineering Corporation Imperial Cargo Shuttle

Scale: Capital

Length: 115 Meters

Skill: Space Transports: Corellian Engineering Corporation Imperial Cargo Shuttle

Crew: 10, Skeleton Crew: 5/+10

Crew Skill: Astrogation 4D+1, Space Transports 5D+2, Capital Ship Shields 4D+1, Sensors 5D

Passengers: 20

Cargo Capacity: 2500 Tons

Consumables: 3 Months

Cost: 400,000 (used)

Hyperdrive Multiplier: X2

Hyperdrive Backup: X12

Nav Computer: Yes

Maneuverability: 1D

Space: 5

Atmosphere: 300, 900kmh

Hull: 3D

Shields: 1D

Sensors:

Passive: 40/1D

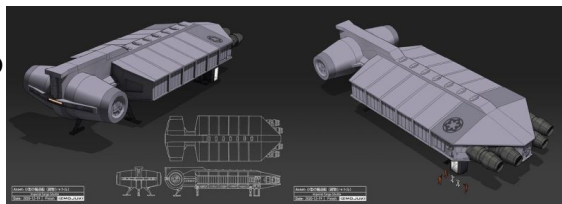
Scan: 80/2D

Search: 100/3D

Focus: 4/4D

Weapons:

Description: The Imperial Cargo Shuttle was a class of shuttle that was used by the Galactic Empire and the YasaburÅ• clan on the planet Tao. YasaburÅ• used one such shuttle to travel to an Imperial-class Star Destroyer and confront his daughter, OchÅ•, who had left the clan for the Empire.



Stats by FreddyB, Descriptive Text from WookieePedia.

Image copyright LucasArts.

Any complaints, writs for copyright abuse, etc should be addressed to the Webmaster [FreddyB](#).