

Name: Lola  
 Species: Human  
 Gender: Female  
 Hair color: Black with white streaks  
 Eye color: Green  
 Skin color: Light  
 Cybernetics: Right arm  
 Move: 10

DEXTERITY: 3D+1

Blaster: 6D  
 Brawling Parry: 5D  
 Dodge: 7D  
 Lightsaber: 7D+2

PERCEPTION: 3D

Bargain: 5D  
 Con: 4D+2  
 Search: 5D  
 Sneak: 5D+2

KNOWLEDGE: 3D

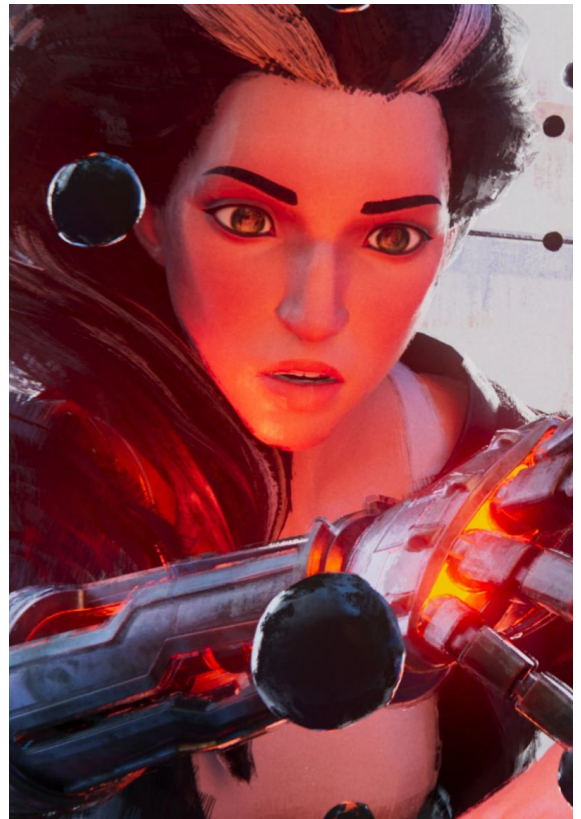
Intimidation: 4D+1  
 Languages: 3D+2  
 Planetary Systems: 5D  
 Scholar; Art: 5D+2  
 Scholar (Sith Lore): 5D+1  
 Streetwise: 4D+1  
 Survival: 5D  
 Tactics: 5D  
 Willpower: 6D

STRENGTH: 3D

Brawling: 6D  
 Climbing/Jumping: 5D+2

MECHANICAL: 2D+1

Astrogation: 2D+2  
 Ground Vehicle Operation: 5D+1  
 Sensors: 4D  
 Starfighter Piloting: 4D+2  
 Starship Gunnery: 3D+2  
 Starship Shields: 4D  
 Repulsorlift Operation: 4D+1



## TECHNICAL: 2D+2

Art & Design: 6D+1

Droid Programming/Repair: 4D

Lightsaber Repair: 5D+2

Security: 5D+2

Special Abilities:

## FORCE SKILLS:

Control: 6D+2

Sense: 6D+1

Alter: 6D+1

Force Powers:- Absorb/Dissipate Energy, Accelerate Healing, Control Pain, Detoxify Poison, Reduce Injury, Remain Conscious, Resist Stun, Life Detection, Life Sense, Magnify Senses, Telekinesis, Lightsaber Combat, Affect Mind, Enhance Attribute, Rage, Combat Sense, Danger Sense.

## EQUIPMENT

Double-bladed lightsaber (5D damage)

2 x Heavy Blaster Pistols (5D)

E2 Droid

Wheelbike

Starfighter

FORCE SENSITIVE - Y

FORCE POINTS 7

DARK SIDE POINTS 2

CHARACTER POINTS 13

Description: Lola was a Force-sensitive female human who, at some point, served as the apprentice of a Sith Master. She eventually abandoned the dark side of the Force in favor of a peaceful life and was hunted down by her former mentor. She wielded a unique double-ended lightsaber with curved blades. One end of the weapon emitted a yellow blade, while the other was red.

## ***Biography***

### *Early life*

At some point the Force-sensitive Lola came under the tutelage of a Sith Master named Kutu, and pledged her allegiance to him. Ultimately she broke her promise, and fled her master's company.

### *Moving on*

Eventually she settled on a frigid astrological body, and took up residence within an obelisk-like structure on its surface. Here, she lived in relative isolation, with only her loyal droid, E2, for company. Devoting herself to artistic pursuits, Lola channelled her Force-sensitivity creatively, and covered the walls of her new home with vibrant painted murals. She also constructed a double-bladed lightsaber, combining her original Sith weapon with a new blade of her own design. Despite her newfound freedom, Lola remained traumatised by her time as a Sith apprentice, and the shadow of Kutu's influence was never far from her

mind. During this time, Lola became peturbed by goblets of inky black paint, which invaded her artwork, spreading darkness throughout her otherwise colorful frescoes. Despite her best efforts to paint over the darkness, it always returned.

---

Stats by FreddyB, Descriptive Text from WookieePedia.

Image copyright LucasArts.

Any complaints, writs for copyright abuse, etc should be addressed to the Webmaster [FreddyB](#).