

Name:

Ghtroc Assault Shuttle

Type: Ghtroc Industries Assault Shuttle

Scale: Starfighter

Length: 25 Meters

Skill: Space Transports - Ghtroc Shuttle

Crew: 2, skeleton 1/+10

Passengers: 40

Crew Skill: Space Transports 5D, Starship

Gunnery 4D+2, Starship Shields 4D

Consumables: 1 Month

Cost: 25,000 (used)

Cargo Capacity: 80 Tons

Hyperdrive Multiplier: X1

Hyperdrive Backup: X10

Nav Computer: Yes

Space: 5

Atmosphere: 295;850kmh

Maneuverability: 1D

Hull: 4D

Shields: 2D

Sensors:

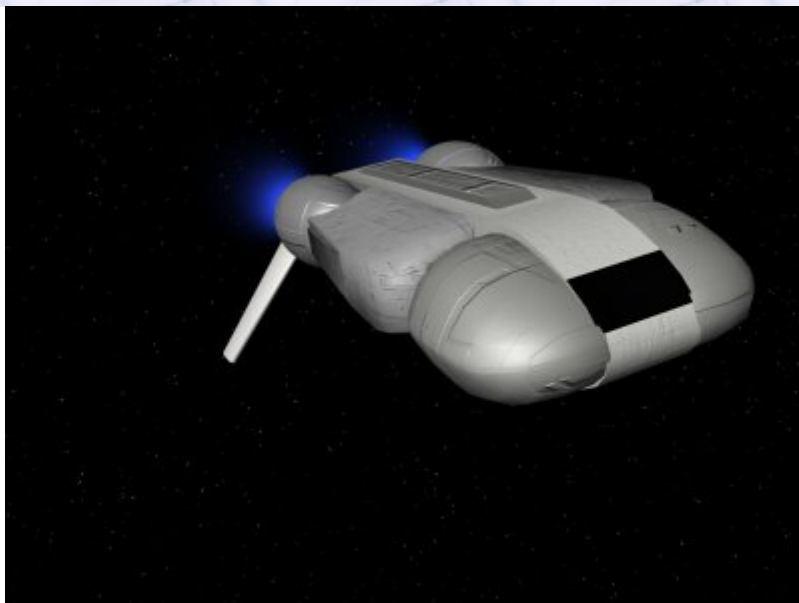
Passive: 20/0D

Scan: 40/1D

Search: 80/2D

Focus: 3/2D+2

Weapons:



Description: The Ghtroc Assault Shuttle was one of the last releases from Ghtroc Industries, and is a near copy of the Lambda Imperial Shuttle. A small and fairly agile transport vessel, capable of carry troops and cargo speedily between systems or planets, these shuttles proved fairly popular, but not enough to save the company from its mounting debts. The Assault Shuttle is unarmed, and therefore proved itself less than popular with military forces, although it ended up in service with the Rebellion in small numbers, but due to desperation on the Rebels part rather than any particular features of the vessel itself. The Shuttle is popular with the civilian market however, acting as a personel shuttle and light cargo vessel. These are common ships, and a number have been modified into fully fledged frieghters, and serve carry cargo along the tradelanes of the galaxy.

---

Page designed in Notepad, logo`s done on Personal Paint on the Amiga.

Text completely by FreddyB. Image is by "Bob the Dinosaur", copyright resides with him.

Any complaints, writs for copyright abuse, etc should be addressed to the Webmaster [FreddyB.](#)