

Craft:

Griven Tank Droid

Type: Griven Empire Tank Droid

Scale: Walker

Length: 4.6 Meters

Skill: Repulsorlift Operation 5D, Vehicle

Blasters 5D, Search 4D

Crew: N/A

Cargo Capacity: 120kg

Cover: N/A

Maneuverability: 2D

Move: 60, 180 kmh

Body Strength: 4D

Weapons:

Heavy Laser Cannon

Fire Arc: Turret

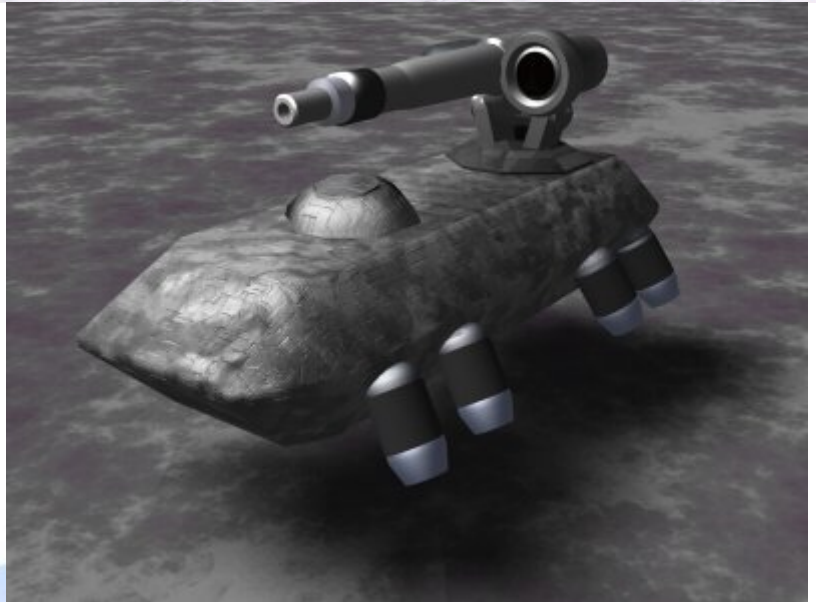
Scale: Walker

Skill: Vehicle Blasters

Fire Control: 3D

Range: 50-500/1.5/2.5km

Damage: 6D



Description: The Griven Tank Droid is a repulsorlift vehicle operated by a droid brain, the fast and well armoured body is topped by a powerful laser cannon and visual sensor scanner mounted onto a turret allowing the droid a 360 degree arc of fire. The Droid is a powerful weapon, capable of causing major damage to enemy emplacements, or securing areas in patrols using its visual sensors. These droids are basic technology however and their level of intelligence is basic to say the least, they are easily fooled and have extremely poor tactical judgement, making them only really useful in direct assaults. The Griven make use of these vehicles in large numbers, making up for their poor levels of intelligence with an organic commander, however this being is vulnerable to attack if an enemy wishes to take advantage of the droids poor programming and intelligence.

---

Page designed in Notepad, logo`s done on Personal Paint on the Amiga.

Text completely by FreddyB. Image is by "Bob the Dinosaur", copyright resides with him.

Any complaints, writs for copyright abuse, etc should be addressed to the Webmaster [FreddyB.](#)