

SNOW WARTHOG

Craft: AMG Transport Dynamics M864A Warthog

Type: Extreme environment condition transport

Scale: Speeder

Dimensions:

-Length: 6m

-Width: 3.2m

-Height: 3m

-Mass: 3.25 metric tons

Skill: Ground vehicle operations: Warthog

Unskilled: N/A

Crew: 1

Crew Skill: ?Firearms 4D+1, grenades 4D, ground vehicle operations 3D+2

Passengers: 1+ (7 with rear)

Cargo Capacity: 4 tons

Cover:

-Crew Cab: 1/2

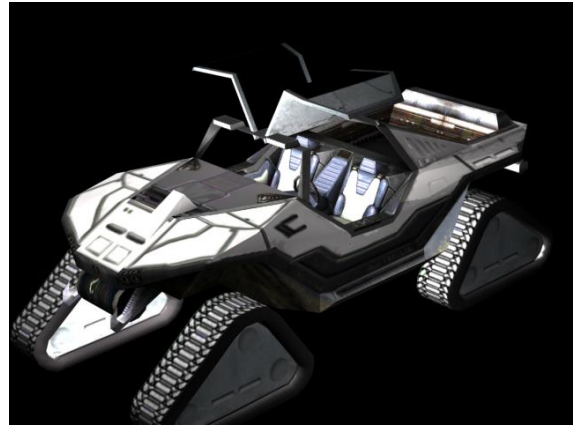
-Rear Section: 3/4

Cost: 27,000 cR (new), 19,000 cR (used)

Maneuverability: 3D

Move: 30; 90kmh

Body Strength: 3D+2



DESCRIPTION:

?? The M864A Snow 'Hog is another variant of the M12 Warthog Force Application Vehicle (FAV) from AMG Transport Dynamics. ?The key difference of the M864S is the replacement of the traditional tires of the M12 series with tracked wheels that can be operated by the M12's drive mechanism, and an enclosed crew cab compartment. ?The Snow 'Hog gets it's name from the fact that it visibly looks like a tracked vehicle meant for snow travel, and most experiences involving it have been in cold, frigid environments, though it is meant for many various extreme environmental conditions.

?? The purpose of the tracked treads is to allow this Warthog variant the ability to traverse terrain that would otherwise impede the standard Warthog's tires. ?The standard M12 is all-terrain, but in extreme environmental conditions (such as heavy snow, earthquakes, volcanic ash, steep inclines, densely rocky landscape, cratered terrain and heavy gravity, to name just a few) its speed is hampered drastically as it attempts to make it's way across the terrain. ?With tracked treads, the Warthog may be slower than the regular M12 models on normal terrain, but it becomes much faster in these extreme conditions as the tracked wheels offer it greater stability than tires would.

?? With the addition of the tracked wheels, the Warthog's mass increases as well as lowering it's center of gravity. ?This makes the Snow 'Hog much harder to tip and roll than other models, as well as lessening the learning curve needed to properly drive the standard Warthog.

?? Due to it's extreme environmental nature, the Snow 'Hog's crew cab has been enclosed in preparation of the hazards it is likely to be used in. ?The cab enclosure is mostly of transparent materials to retain visibility, though variants exist with cabs made of sturdier materials to increase defensive capability, at the cost of visibility. ?The cab can be made air-tight with the flip of a switch, closing off external ventilation and relying on a 6-hour internal oxygen supply and, if needed, other heavy duty environmental adjustment controls for temperature regulation and atmospheric oxygen purification (if available). The Snow 'Hog also has equipment for testing the atmosphere for toxicity from inside the enclosed cab.

?? While usually not equipped with turret weapons like the other Warthog variants (due to the rear section usually not being enclosed and used for transporting troops in environmental gear or other cargo and equipment), the Snow 'Hog CAN be given such weapons at any time. ?In fact, some battles between the UNSC and Covenant or Insurrection forces (more the latter) have been won by UNSCDF troops mounting the regular Warthog weapons onto Snow 'Hogs and either outmaneuvering the enemy with superior tactical ability in these extreme environments (Rebels) or by surprising an enemy who thought the UNSC would be hampered by these same environments (Covenant).

Page designed in Notepad, Logo`s done in Personal Paint on the Commodore Amiga

All text, HTML and logos done by FreddyB

Images stolen from an unknown website at some remote time in the past.

Any complaints, writs for copyright abuse, etc should be addressed to the Webmaster [FreddyB](#).