

Name: Industrial Automaton R4-P Astromech Droid

Type: Industrial Automaton R4 Agromech Droid

DEXTERITY 1D

KNOWLEDGE 1D

MECHANICAL 2D

Astrogation 4D, Starfighter Piloting 4D

PERCEPTION 1D

STRENGTH 1D

TECHNICAL 2D

Starfighter Repair 5D, Starship Weapons Repair 4D

Equipped With:

Three wheeled legs (one retractable)

Holographic projector/recorder

Various utility/repair tools

Acoustic signaller

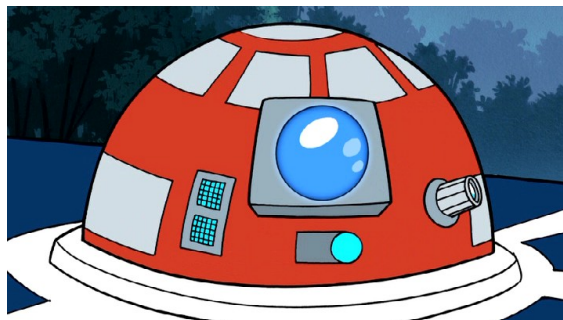
Move: 0

Size: 0.96 metres

Cost: 3,000

Description: The R4-P was a model of R-series astromech droid manufactured by Industrial Automaton. It was an R4 astromech droid permanently integrated into the customized Jedi version of the Kuat Systems Engineering Delta-7 Aethersprite-class light interceptor, allowing the starfighter to interface with KSE's Syliure-31 hyperspace docking ring.

Although part of the R4-series of astromech droids, the R4-P and all other Jedi Temple astromechsâ€™ were based on Obi-Wan Kenobi's droid, R4-P17, which had an R2-style dome rather than the usual conical head dome.



Stats by FreddyB, Descriptive Text from WookieePedia.

Image copyright LucasArts.

Any complaints, writs for copyright abuse, etc should be addressed to the Webmaster [FreddyB](#).