

Name: Whie Malreaux  
 Died: 19 BBY, Coruscant  
 Species: Human  
 Gender: Male  
 Hair color: Blond  
 Eye color: Blue  
 Skin color: Fair  
 Move: 10

DEXTERITY: 3D

Brawling Parry: 4D  
 Blaster: 3D+2  
 Dodge: 4D+2  
 Lightsaber: 5D+2  
 Vehicle Blasters: 3D+2

PERCEPTION: 2D+2

Bargain: 3D+1  
 Hide: 4D+1  
 Investigation: 4D  
 Persuasion: 3D+2  
 Search: 4D+1  
 Sneak: 4D+2

!KNOWLEDGE: 2D+1

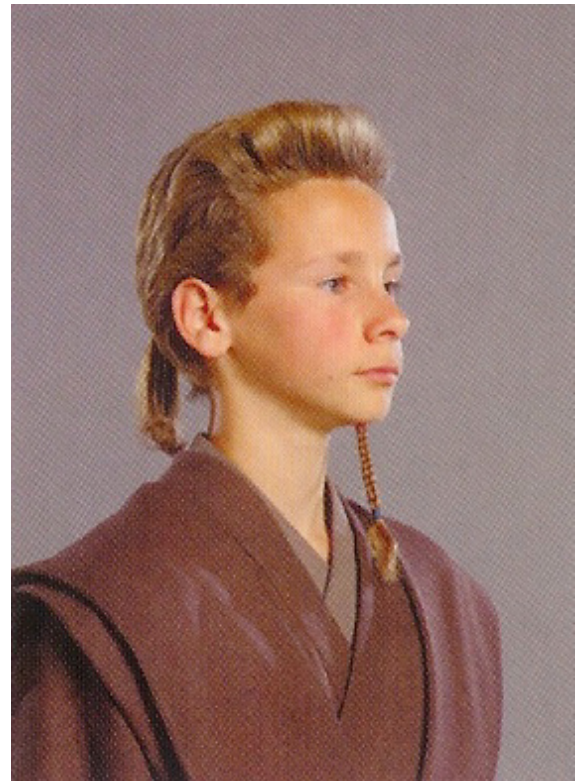
Alien Species 3D  
 Cultures: 3D+1  
 Languages: 3D+1  
 Scholar (Jedi Lore): 4D+1  
 Planetary Systems: 3D  
 Streetwise: 3D  
 Survival: 3D+1  
 Willpower: 4D

STRENGTH: 2D

Brawling: 4D+1  
 Climbing/Jumping: 4D+2

MECHANICAL: 2D

Astrogation: 2D+2  
 Starship Gunnery: 3D+1  
 Repulsorlift Operation: 3D+2  
 Starship Shields: 3D  
 Sensors: 3D+2



## TECHNICAL: 2D

First Aid: 4D+1

Lightsaber Repair: 4D

## SPECIAL ABILITIES

### Force Skills:

Control: 5D

Sense: 5D

Alter: 5D+2

Force Powers: Absorb/Dissipate Energy, Accelerate Healing, Concentration, Control Pain, Detoxify Poison, Emptiness, Enhance Attribute, Hibernation Trance, Reduce Injury, Remain Conscious, Resist Stun, Combat Sense, Danger Sense, Instinctive Astrogation, Life Detection, Life Sense, Magnify Senses, Receptive

Telepathy, Sense Disturbance, Sense Force, Sense Path, Telekinesis, Lightsaber Combat, Projective Telepathy, Accelerate Another's Healing, Control Another's Pain, Return Another To Consciousness, Affect Mind, Enhanced Coordination

## EQUIPMENT

Lightsaber (5D), Jedi Robes, Comlink, Utility Belt

FORCE SENSITIVE: Y

FORCE POINTS: 2

DARK SIDE POINTS: 0

CHARACTER POINTS: 4

Description: Whie Malreaux was a Force-sensitive human male Jedi Padawan who lived during the final years of the Galactic Republic. He was killed by the Sith Lord Darth Vader, who led the Siege of the Jedi Temple on Coruscant in the waning days of the Clone Wars.

### *Biography*

Whie Malreaux was a member of the Jedi Order prior to the rise of the Galactic Empire. He lived during the last years of the Galactic Republic, an era defined by a growing secessionist movement that culminated in the galaxy-wide civil war known as the Clone Wars. By the third year of the conflict, Darth Sidious—the Dark Lord of the Sith publicly known as Supreme Chancellor Sheev Palpatine—tasked his new apprentice, the Sith Lord Darth Vader, with leading the 501st Legion in the Siege of the Jedi Temple on Coruscant as part of the implementation of Order 66. During the invasion, Malreaux fought beside his Jedi brothers and sisters in defense of the Temple, but was ultimately killed alongside Bene and Jedi Master Cin Drallig in a duel with Vader. After the fall of the Temple, Obi-Wan Kenobi witnessed the actions of his fallen apprentice, including Malreaux's death, through a holographic recording of the battle.

### *Personality and traits*

Whie Malreaux was a human male who possessed a fair complexion, blond hair, and blue eyes. He also wore a Padawan braid, marking his status within the Jedi Order. During the fall of the Jedi Temple, he stood with his fellow Jedi against Darth Vader, an act which cost Malreaux his life.

### *Powers and abilities*

As a Padawan learner, Whie Malreaux was trained in the Jedi arts in order to hone his natural talents with the Force. At the time of Order 66, he wielded a green-colored lightsaber.

---

Stats by FreddyB, Descriptive Text from WookieePedia.

Image copyright LucasArts.

Any complaints, writs for copyright abuse, etc should be addressed to the Webmaster [FreddyB](#).