

Starships D6 / Rothana Heavy Engineering

Acclaim Cargo Transporter

Type: Rothana Heavy Engineering Acclaim

Class Cargo Transporter

Scale: Capital

Length: 680 Meters

Skill: Capital Ship Piloting: Acclaim

Crew: 280; Skeleton Crew: 120/+10

Crew Skill: Astrogation 4D+1, Capital Ship

Piloting 5D+2, Capital Ship Shields 4D+1,

Sensors 5D

Passengers: 1500

Cargo Capacity: 60,000 Tons

Consumables: 1 Year

Cost: 180,000 (used)

Hyperdrive Multiplier: X3

Hyperdrive Backup:

Nav Computer: Yes

Maneuverability: 0D+1

Space: 4

Atmosphere: 300;880kmh

Hull: 5D

Shields: 1D

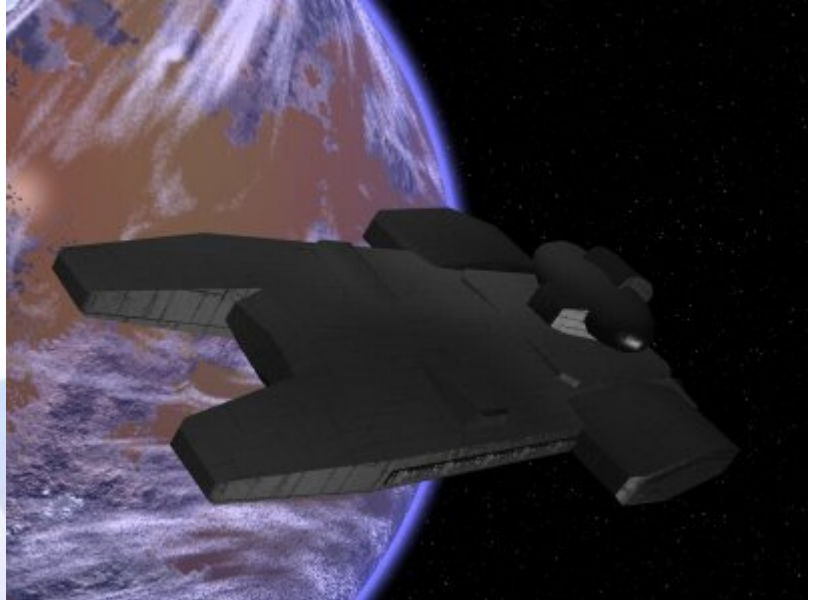
Sensors:

Passive: 30/0D

Scan: 50/2D

Search: 90/3D

Focus: 2/4D



Weapons:

Description: The Acclaim Cargo Transporter is a predecessor to the Acclamator Troop Transport, and shares a number of features with the later model. The Acclaim is still one of the largest vessels which can land on a planetary surface, and through its massive front doors it can unload huge quantities of cargo. Because of its close relationship with the Acclamator, the Acclaim is often converted to military use, because the same cargo doors which allow its cargo hold to be unloaded in record time, also allow tanks and walkers to leave quickly, making this a very effective military transport. With a huge cargo bay, and

plenty of room for modifications, the Acclaim still reaches premium prices when sold, and very few newer vessels match the efficiency and quality of this older vessel.

Page designed in Notepad, logo`s done on Personal Paint on the Amiga.

Text completely by FreddyB. Image is by "Bob the Dinosaur", copyright resides with him.

Any complaints, writs for copyright abuse, etc should be addressed to the Webmaster [FreddyB.](#)

