

Model:

APBA Snow Suit

Type: Core Defence Industries All Purpose Battle Armour Snow Suit

Cost: 7,000

Availability: 2, X

Game effects:

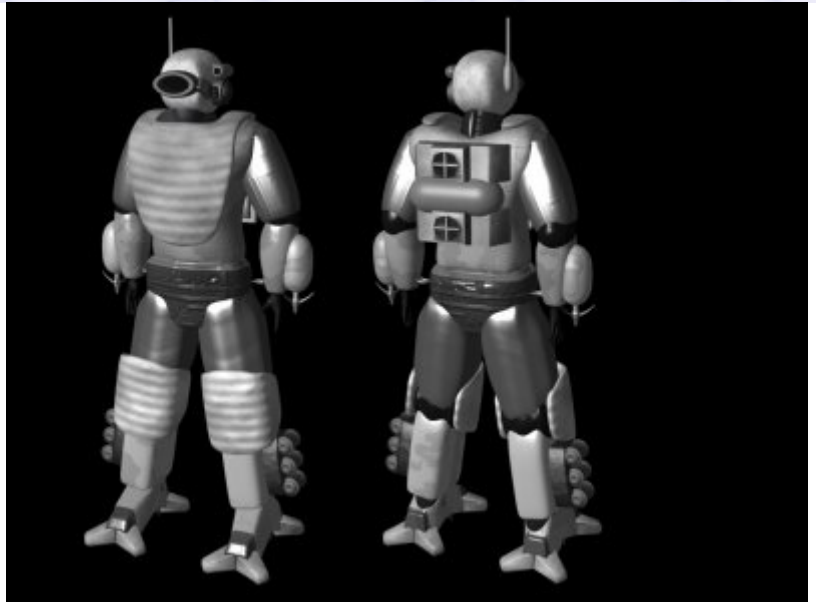
Basic Suit:

+2D+1 phys

+1D+2 energy

-1D dex penalty to Dexterity and related skills

+2D Strength for Melee Combat



Commlink:

250 km Range

Optic Enhancement

+1D Search

Infra Red Vision

Grapple Lines * 2

Skill: Missile Weapons

Range: 3-10/50/200

Damage: 2D

Description: The armour has a 200m line of rope and grapple gun attached to each arm, allowing the user to fire the hooks and rope to climb sheer surfaces.

Climbing Claws

These claws are designed to help the armours wearer to climb cliffs and other icy terrain, and gives a +2D bonus to climbing rolls.

Grenade Deployer (8 Grenades)

Skill: Grenade

Range 2-5/10/25

Blast Radius: 0-2/4/6/10

Damage: 5D/4D/3D/2D

Life Support System

This system not only provides fresh air for the wearer, protecting them against gases and poisons, but also provides heat and protection against the freezing temperatures that the armour is designed to operate in.

Snow Treads

Reduces Terrain Difficulties in Arctic Conditions by two levels.

Description: After the destruction of Alderaan a native of that world, Almek Obsidian, became somewhat obsessive about military power, and set up Core Defence Industries (CDI) to supply defence to other worlds so the same could never happen again. However the unbalanced nature of the industrialist and the corporation he founded, led to many headaches for the fledgling New Republic, as the power weapons and vessels were sold to anyone without restriction, meaning that these state of the art weapons of war were available to terrorists, pirates and other criminals. Fortunately, for the New Republic at least, Almek Obsidian died after only a couple of years, and the absence of his genius, although unbalanced, hand at the helm meant that CDI went into receivership shortly afterwards. The CDI All Purpose Battle Armour, Basic Suit is the basis for the rest of the APBA suits. A modified form of the older Blocker armour, the APBA was designed to be easily modifiable to a variety of different roles, allowing the armour to be used in space and other dangerous environments. The Snow suit was designed to operate on low temperature worlds and to operate in snow and ice conditions, providing life support and heat to the wearer in freezing conditions. The Armour provides help in climbing and scaling the dangerous terrain as well as specialised feet modules to help traverse ice without losing traction and risking breaking through weakened areas of ice. The armour provides limited weapons in the form of a grenade deployment system, but this is not as effective as that on other armours, but the wearer is free to carry any normal offensive weaponry.

Page designed in Notepad, logo`s done on Personal Paint on the Amiga.

Text completely by FreddyB. Image is by "Bob the Dinosaur", copyright resides with him.

Any complaints, writs for copyright abuse, etc should be addressed to the Webmaster [FreddyB.](#)