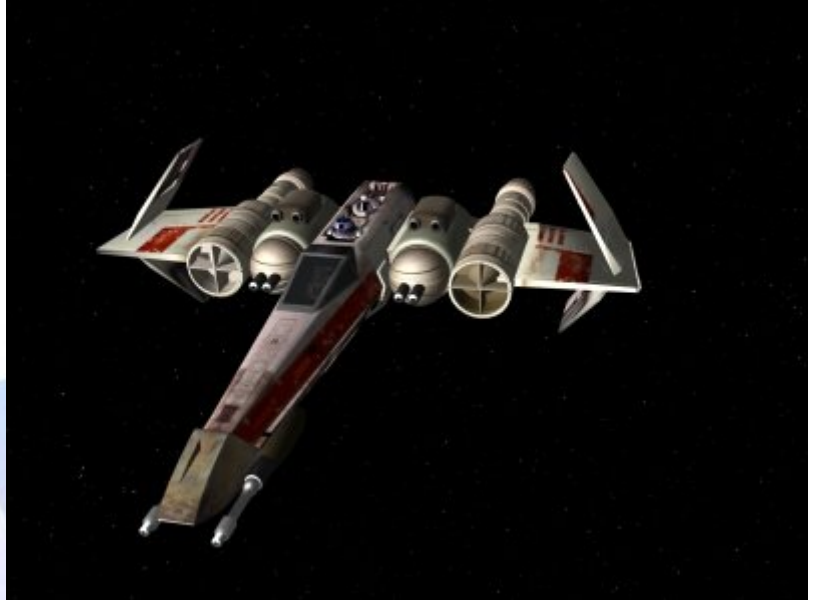


Starships D6 / Incom T-71 Assault Gunship

Name: Incom Assault Gunship
Type: Incom T-71 Assault Gunship
Scale: Starfighter
Length: 12.1 Meters
Skill: Starfighter Piloting - Assault Gunship
Crew: 1+Droid; Skeleton Crew: 1
Crew Skill: Starfighter Piloting 5D, Starship Gunnery 4D+2, Starship Shields 3D
Consumables: 1 Week
Cost: 210,000 (new)
Cargo Capacity: 60 Kg
Hyperdrive Multiplier: X1
Hyperdrive Backup: na
Nav Computer: None (Uses Astromech Droid)
Space: 7
Atmosphere: 325;950kmh
Maneuverability: 2D
Hull: 4D
Shields: 3D
Sensors:
 Passive: 30/1D
 Scan: 55/2D
 Search: 70/3D
 Focus: 4/5D
Weapons:
 4 Light TurboLaser Cannons (Fire-Linked)
 Scale: Capital
 Fire Arc: Front
 Fire Control: 2D
 Space: 1-10/25/50
 Atmosphere Range: 1-2/50/100km
 Damage: 5D
 2 * Twin Blaster Cannons
 Scale: Starfighter
 Fire Arc: Turret
 Fire Control: 4D *



Space: 1-8/25/40

Atmosphere Range: 100-800/2.5/4km

Damage: 5D

2 Heavy Ion Cannons (Fire-Linked)

Scale: Starfighter

Fire Arc: Front

Fire Control: 3D

Space: 1-3/7/36

Atmosphere Range: 100-300/700/3.6km

Damage: 6D

*: The Blaster Cannon turrets on the Assault Gunship are operated by the vessels Astromech droid in defence of the fighter, the droid itself has no skill with these weapons so relies almost totally upon the target acquisition systems of the fighter itself.

Description: The X-Wing fighter has constantly been one of the most successful fighters ever constructed, both in military and commercial success, however this success has also forced the fighter into roles it was never intended to fulfil. The Assault Gunship is an adaptation of the X-Wing design intended for anti capital ship use, and has been designed with powerful turbolasers as well as anti starfighter weaponry aboard it. The ship has two large pods either side of the cockpit which contain twin turbolaser cannons plus the power generators needed to fire them, atop these pods are turret mounted blaster cannons which are operated by the fighters astromech droid in defence of the vessel. This is intended to allow the pilot to concentrate on his target, and allow the defence of the fighter to be achieved virtually automatically, although in reality an Astromech droid is not a perfect gunner and requires some help and convincing to take down sentient attackers. The proton torpedo launchers have been removed since the fighter is considered to have enough firepower with its turbolasers, and the addition of two heavy Ion Cannons round out the gunships weapon load, allowing it to disable most starfighters with relative ease. The Assault Gunship is a powerful vessel, something demonstrated by its price, which has kept its sales low, but these tough fighters have gained a lot of respect across the galaxy and sales look likely to continue in modest levels for some time to come.

Page designed in Notepad, logo`s done on Personal Paint on the Amiga.

Text completely by FreddyB. Image is by "Bob the Dinosaur", copyright resides with him.

Any complaints, writs for copyright abuse, etc should be addressed to the Webmaster [FreddyB.](#)