

Name: AT-

AT Barge

Type: Sienar Fleet Systems AT-AT

Transportation Barge

Scale: Starfighter

Length: 40m

Skill: Space Transports - AT-AT Barge

Crew: 2

Crew Skill: varies

Passengers: 20

Consumables: 1 Week

Cargo Capacity: 1 AT-AT + 5 Tons

Hyperdrive Multiplier: na

Hyperdrive Backup: na

Nav Computer: na

Space: 4

Atmosphere: 480;800kmh

Maneuverability: 0D+1

Hull: 7D

Shields: 2D

Sensors:

Passive: 10/0D

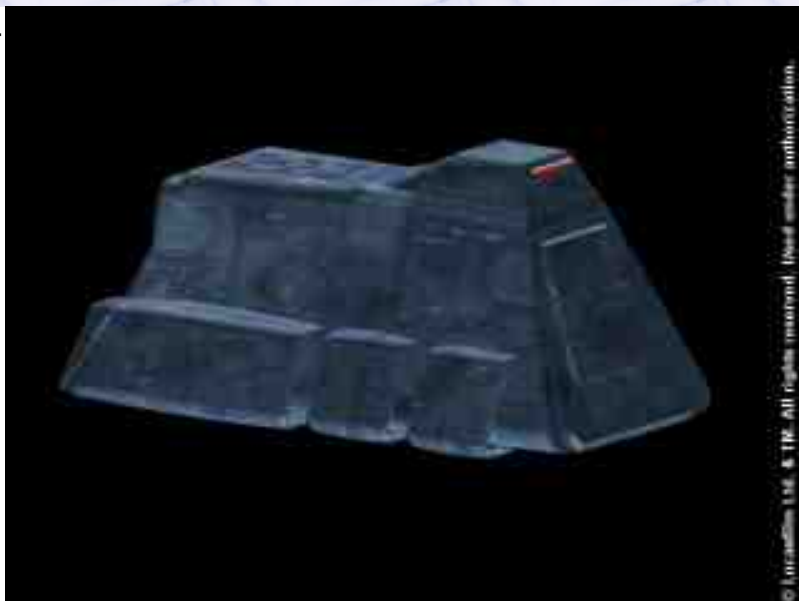
Scan: 20/0D+2

Search: 40/1D+1

Focus: 1/2D

Weapons:

Description: The Sienar AT-AT Barge is a simplistic vessel, designed for only one purpose, to transport a single AT-AT Walker from orbit to the surface of a planet. The Barge's one redeeming feature is its extremely heavy armour, which allows it to resist massive amounts of damage, but apart from this it is a slow, unmaneuverable vessel which carries only small amounts of supplies. There have been a number of these ships which have been abandoned and later salvaged, and modified into cargo vessels. In this form they can carry a large amount of cargo (300 tonnes), but lose a fair amount of this to the addition of hyperdrive and weapons. It is also worth mentioning that the AT-AT Barge has one of the worst sensor packages ever designed, which was a blatant cost cutting exercise by Sienar, since these ships would usually be operating from Star Destroyers, with Tie Fighter Escorts, so sensors were considered to be a necessary but unimportant feature.



Text completely by FreddyB. Image is by LucasArts, copyright resides with them.

Any complaints, writs for copyright abuse, etc should be addressed to the Webmaster [FreddyB.](#)