

Name: AT-

ST Transport

Type: Sienar Fleet Systems AT-ST Transport

Scale: Starfighter

Length: 28m

Skill: Space Transports - AT-ST Transport

Crew: 2

Crew Skill: varies

Passengers: 10

Consumables: 1 Week

Cargo Capacity: 2 AT-ST + 25 Tons

Hyperdrive Multiplier: na

Hyperdrive Backup: na

Nav Computer: na

Space: 6

Atmosphere: 640;1000kmh

Maneuverability: 1D

Hull: 4D

Shields: 2D

Sensors:

Passive: 10/0D

Scan: 20/0D+2

Search: 40/1D+1

Focus: 1/2D

Weapons:

2 \* Blaster Cannon Turrets

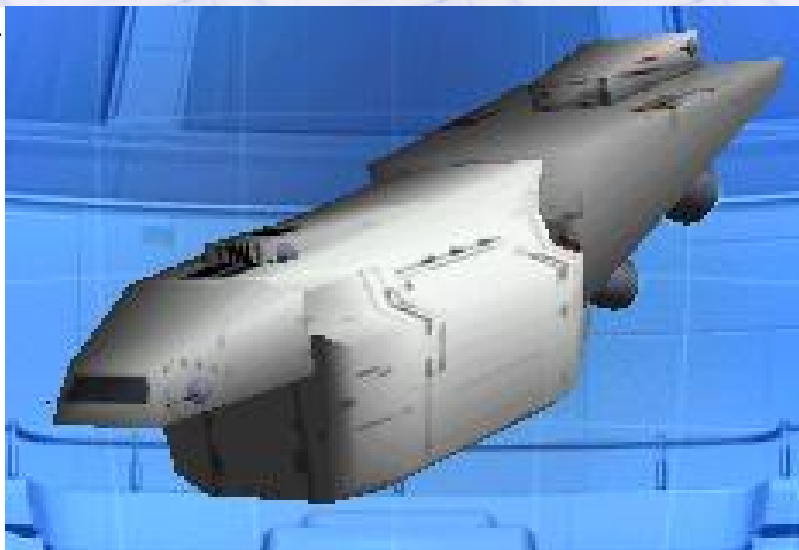
Fire Arc: Turret

Fire Control: 2D

Space: 1-3/12/25

Atmosphere Range: 100-300/1.2/2.5km

Damage: 4D



Description: The ATST Transport vessel is a companion ship to the ATAT Barge, slightly smaller and capable of carrying two ATST (or equivalently sized walkers), the ATST Transport is faster than its companion, meaning that in battle scout walkers can be dropped off to secure an area before the ATAT's arrive. The Light armament of the ATST Transport is also designed with this role in mind, although is often considered to be too light to make much of a difference. ATST Transports are common throughout the Empire and are seldom found outside Imperial service, although some have been refitted by pirate and rebel forces into perfectly servicable transport ships once the ATST transportation areas have been removed freeing up over 60 tonnes of cargo space each.

---

Page designed in Notepad, logo`s done on Personal Paint on the Amiga.

Text completely by FreddyB. Image is by LucasArts, copyright resides with them.

Any complaints, writs for copyright abuse, etc should be addressed to the Webmaster [FreddyB.](#)