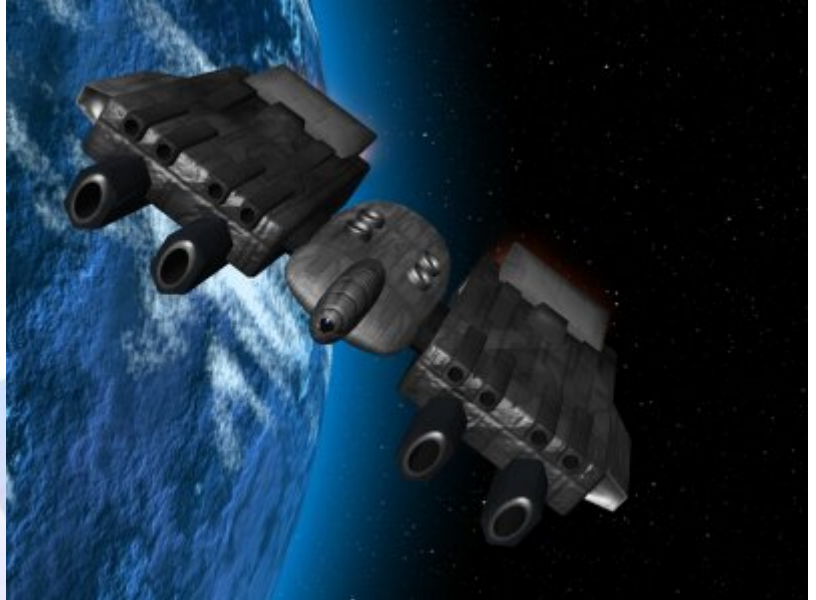


## Starships D6 / Core Defence Industries

Name: CDI Patrol Ship  
Type: Core Defence Industries Crusader  
Class Patrol Ship  
Scale: Capital  
Length: 58 Meters  
Skill: Capital Ship Piloting: Crusader  
Crew: 5; Skeleton Crew: 3/+10  
Crew Skill: Astrogation 4D+1, Capital Ship  
Piloting 5D+2, Capital Ship Shields 4D+1,  
Capital Ship Gunnery 5D+2, Sensors 5D  
Passengers: 50  
Cargo Capacity: 90 Tons  
Consumables: 6 Months  
Cost: 1.6 Million (new); 650,000 (used)  
Hyperdrive Multiplier: X1  
Hyperdrive Backup: X8  
Nav Computer: Yes  
Maneuverability: 3D  
Space: 6  
Atmosphere: 300; 850kmh  
Hull: 5D  
Shields: 3D  
Sensors:  
    Passive: 40/1D  
    Scan: 80/2D  
    Search: 120/3D  
    Focus: 3/4D



### Weapons:

4 Combined Turbolaser/Ion Cannons (Fire Linked) \*  
    Scale: Capital  
    Fire Arc: Front  
    Fire Control: 3D+2  
    Space: 3-15/36/75  
    Atmosphere: 6-30/72/150 Km  
    Damage: 6D  
8 Concussion Missile Launchers

Scale: Capital  
Fire Arc: Front  
Fire Control: 2D  
Space: 1/3/7  
Atmosphere: 2/6/14km  
Damage: 7D

\*: These weapons combine the effects of an Ion Cannon within the same weapon as that of a TurboLaser Cannon, this allows the weapons to be switched between conventional damage, and Ion Damage.

Description: After the destruction of Alderaan a native of that world, Almek Obsidian, became somewhat obsessive about military power, and set up Core Defence Industries (CDI) to supply defence to other worlds so the same could never happen again. However the unbalanced nature of the industrialist and the corporation he founded, led to many headaches for the fledgling New Republic, as the power weapons and vessels were sold to anyone without restriction, meaning that these state of the art weapons of war were available to terrorists, pirates and other criminals. Fortunately, for the New Republic at least, Almek Obsidian died after only a couple of years, and the absence of his genius, although unbalanced, hand at the helm meant that CDI went into receivership shortly afterwards. The CDI Crusader Class Patrol Ship is a compact and highly manueverable capital ship, which packs a lot of forward firepower, allowing it to take on vessels much larger than itself. Its multiple missile launchers and combined Ion/Laser weapons allow it to disable and destroy vessels with ease, which has led to its increasing popularity with pirates and rogue warlords who use its abilities to sieze enemy ships and cargoes, leading to increased worries by the New Republic about ownership of such a powerful small vessel. However when used properly, the Crusader can protect space lanes, and take out pirate bases, meaning it has served its original design criteria perfectly.

---

Page designed in Notepad, logo`s done on Personal Paint on the Amiga.

Text completely by FreddyB. Image is by "Bob the Dinosaur", copyright resides with him.

Any complaints, writs for copyright abuse, etc should be addressed to the Webmaster [FreddyB.](#)