

Name:

Dalas Brac Starfighter Carrier

Type: Galactech "Dalas-Brac" Class

Starfighter Carrier

Scale: Capital

Length: 480 Meters

Skill: Capital Ship Piloting: Dalas-Brac Carrier

Crew: 1,485; skeleton 430/+15

Passengers/Troops: 1200

Crew Skill: Capital Ship Piloting 4D+1,

Capital Ship Gunnery 4D+1, Capital Ship

Shields 4D+1

Consumables: 1 Year

Cargo Capacity: 2,000 Tons

Hyperdrive Multiplier: X1

Hyperdrive Backup: X18

Nav Computer: Yes

Space: 3

Maneuverability: 0D+1

Hull: 4D

Shields: 2D

Sensors:

Passive: 45/1D

Scan: 90/2D

Search: 180/3D

Focus: 3/4D

Fighters: 45

Transports: 3

Weapons:

2 TurboLaser Cannons

Scale: Capital

Fire Arc: 1 Front/Left, 1 Front/Right

Fire Control: 2D

Space: 2-10/24/60

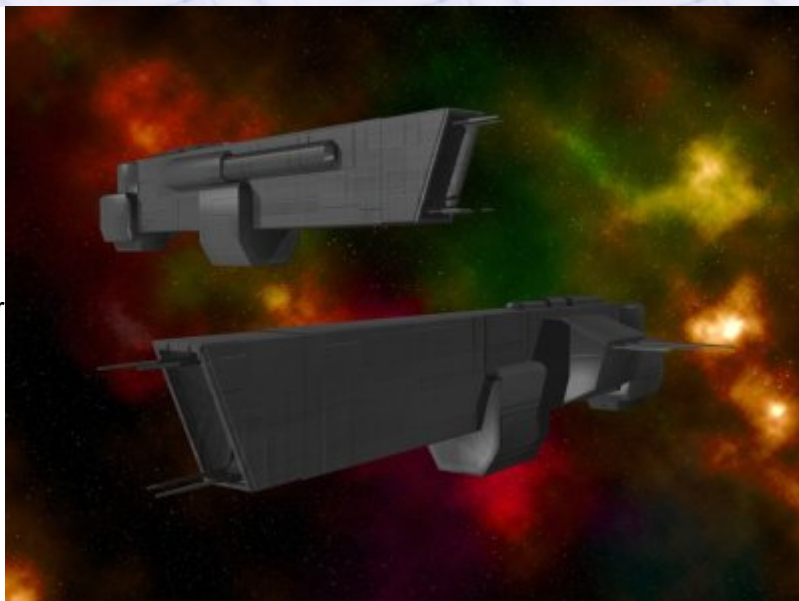
Atmosphere Range: 4-20/48/120km

Damage: 4D

12 Laser Cannon Turrets

Scale: Starfighter

Fire Arc: 4 Front, 3 Left, 3 Right, 2 Back



Fire Control: 2D

Space: 1-3/12/25

Atmosphere Range: 2-6/24/50km

Damage: 4D

Description: The Dalas-Brac Starfighter Carrier was designed and built in the years following the Battle of Endor, since Starfighters were the superior force in space combat during that period. With squadrons of starfighters capable of engaging and destroying most capital ships, it became necessary for any military force to be able to field as many fighters as possible. The Dalas-Brac Class was sold mainly to mercenary and independant fleets, since the New Republic and Imperial Remnants both had their own carriers, and in this limited market place the vessel was fairly successful. Dalas-Brac's are puny against other capital ships, having only two turbo laser cannons to cover its front and sides, and no anti-capital ship weaponry to its rear at all. Also for a vessel its size, the Dalas-Brac has few anti-starfighter weapons, relying on its starfighter squadrons for defence and attack capability. Most consider the vessel too large for its role, although it does provide large numbers of support personel and repair bays to keep its squadrons operational, these vessels devote most of their internal space to their large outdated engines, and to the support systems required by their starfighters.

---

Page designed in Notepad, logo`s done on Personal Paint on the Amiga.

Text completely by FreddyB. Image is by "Bob the Dinosaur", copyright resides with him.

Any complaints, writs for copyright abuse, etc should be addressed to the Webmaster [FreddyB.](#)