

Name:

DarkFury Starfighter

Type: CorelliArms A-384 DarkFury Starfighter

Scale: Starfighter

Length: 6.8 Meters

Skill: Starfighter Piloting - DarkFury

Crew: 1

Crew Skill: Starfighter Piloting 4D, Starship

Gunnery 3D

Consumables: 4 Days

Cost: 23,000 (used)

Cargo Capacity: 30 Kilograms

Hyperdrive Multiplier: No

Hyperdrive Backup: No

Nav Computer: NA

Space: 5

Atmosphere: 300;900kmh

Maneuverability: 1D

Hull: 3D

Shields: No

Sensors:

Passive: 15/0D

Scan: 20/1D

Search: 30/2D

Focus: 1/3D

Weapons:

Twin Laser Cannons (Firelinked)

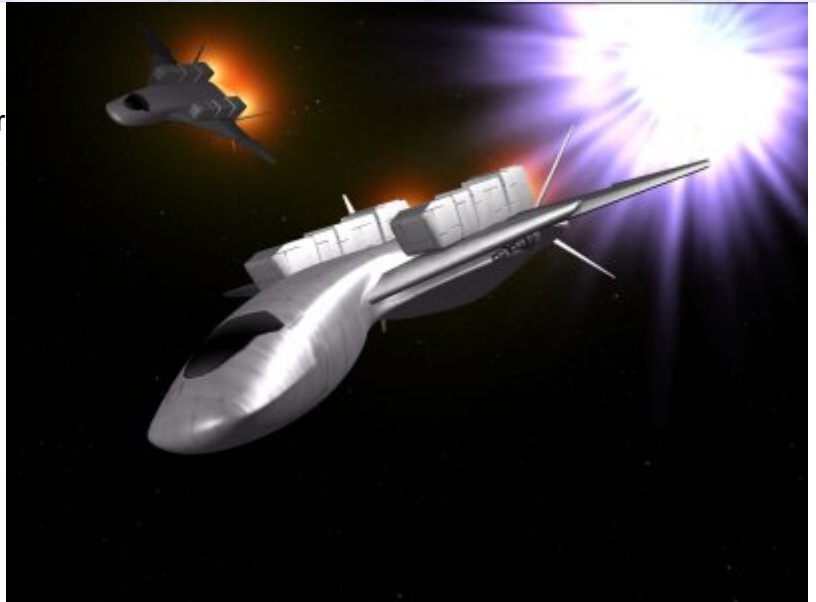
Fire Arc: Front

Fire Control: 1D

Space: 1-3/12/25

Atmosphere Range: 100-300/1.2/2.5km

Damage: 4D



Description: The CorelliArms A-384 DarkFury Starfighter is an older starfighter design from a company that would one day become integrated into the Industrial giant that now is the Corellian Engineering Corporation. These starfighters were modified atmospheric fighters with cockpit pressurisation and large booster engines added to allow them to take off from a planetary surface. Although now a weak starfighter these vessels were state of the art for over a century until the Naboo N-1 and Incom Z-95 Headhunter were released shortly before the foundation of the Empire. DarkFury's are now used by very few people, although have developed a discount level of pricing, but their lack of shielding and hyperdrive

coupled with slow speed and a weak hull makes them unpopular with those who are forced to pilot such an ancient vessel.

---

Page designed in Notepad, logo`s done on Personal Paint on the Amiga.

Text completely by FreddyB. Image is by "Bob the Dinosaur", copyright resides with him.

Any complaints, writs for copyright abuse, etc should be addressed to the Webmaster [FreddyB.](#)