

Name:

Imperial Builder Shuttle

Type: Sienar Fleet Systems Epsilon Builder Shuttle

Scale: Starfighter

Length: 40 Meters

Skill: Space Transports - Epsilon Shuttle

Crew: 2, skeleton 1/+5

Passengers: 5

Crew Skill: Space Transports 5D, Starship

Gunnery 4D+2, Starship Shields 4D

Consumables: 1 Month

Cargo Capacity: 10 Tons \*

Hyperdrive Multiplier: X2

Hyperdrive Backup: NA

Nav Computer: Yes

Space: 5

Atmosphere: 295;850kmh

Maneuverability: 1D

Hull: 4D

Shields: 1D

Sensors:

Passive: 20/0D

Scan: 40/1D

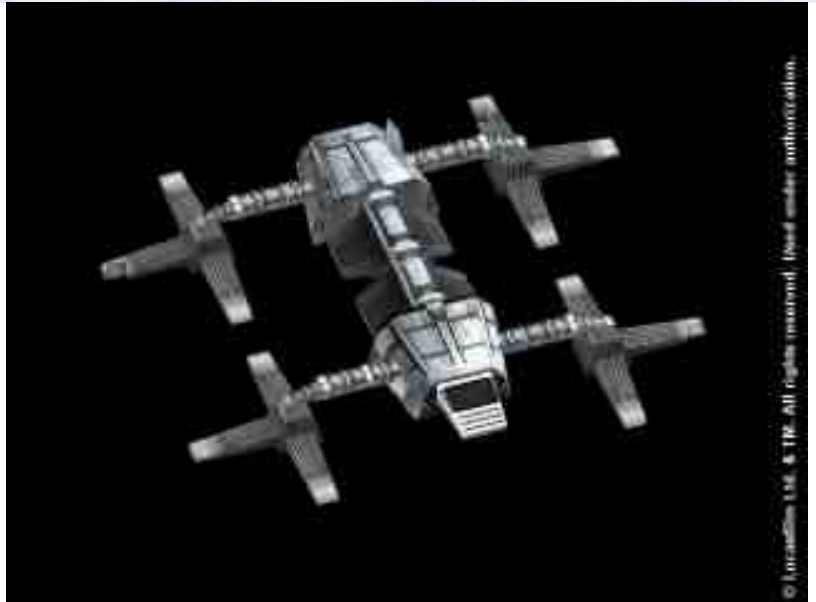
Search: 80/2D

Focus: 4/2D+2

Weapons:

\* - The External grapples of the Epsilon Shuttle can lift cargo of up to 200 Tonnes, or carry any vessel smaller than itself.

Description: The Epsilon Shuttle is designed to carry cargo pods between surface installations and orbital bases, and therefore is ill equipped for the rigors of long range transportation with a weak hyperdrive and no weaponry. The Empire has bought a large number of these shuttles and use them for everything from cargo transportation, to the carrying of starships between docks, civilian use of the Epsilon shuttle is limited but still a fairly common sight throughout the galaxy. These shuttles are often seen carrying cargo pods from planetary surfaces to orbiting bulk transports, or carrying impounded vessels around Imperial customs installations, meaning that civilian Epsilons can often manage to grab Imperial cargoes with minimal interference. The Epsilon is similar in many ways to the Sentinel and Lambda class shuttles



and uses a number of the same parts making it easy and cheap to repair and maintain.

---

Page designed in Notepad, logo`s done on Personal Paint on the Amiga.

Text completely by FreddyB. Image is by LucasArts, copyright resides with them.

Any complaints, writs for copyright abuse, etc should be addressed to the Webmaster [FreddyB.](#)