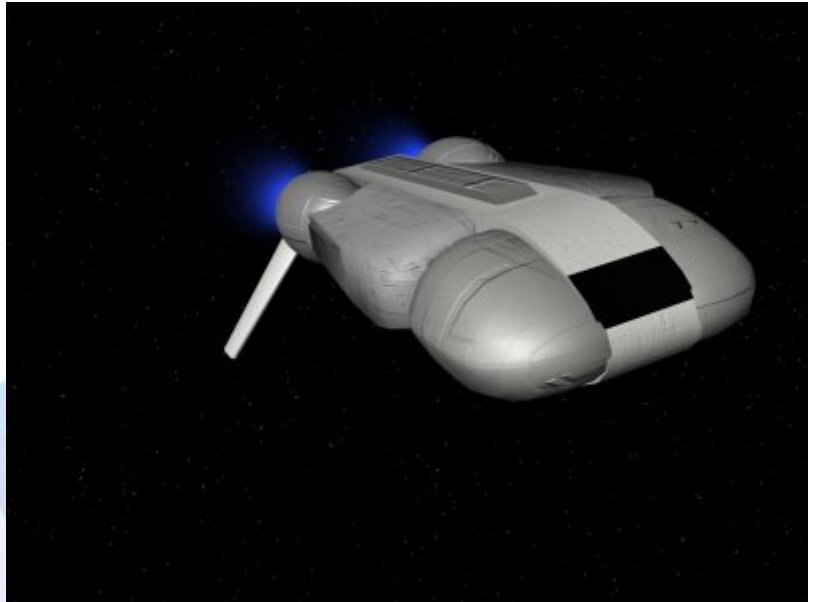


## Starships D6 / Ghtroc Industries Assault

Name: Ghtroc Assault Shuttle  
Type: Ghtroc Industries Assault Shuttle  
Scale: Starfighter  
Length: 25 Meters  
Skill: Space Transports - Ghtroc Shuttle  
Crew: 2, skeleton 1/+10  
Passengers: 40  
Crew Skill: Space Transports 5D, Starship  
Gunnery 4D+2, Starship Shields 4D  
Consumables: 1 Month  
Cost: 25,000 (used)  
Cargo Capacity: 80 Tons  
Hyperdrive Multiplier: X1  
Hyperdrive Backup: X10  
Nav Computer: Yes  
Space: 5  
Atmosphere: 295;850kmh  
Maneuverability: 1D  
Hull: 4D  
Shields: 2D  
Sensors:  
    Passive: 20/0D  
    Scan: 40/1D  
    Search: 80/2D  
    Focus: 3/2D+2



Weapons:

Description: The Ghtroc Assault Shuttle was one of the last releases from Ghtroc Industries, and is a near copy of the Lambda Imperial Shuttle. A small and fairly agile transport vessel, capable of carry troops and cargo speedily between systems or planets, these shuttles proved fairly popular, but not enough to save the company from its mounting debts. The Assault Shuttle is unarmed, and therefore proved itself less than popular with military forces, although it ended up in service with the Rebellion in small numbers, but due to desperation on the Rebels part rather than any particular features of the vessel itself. The Shuttle is popular with the civilian market however, acting as a personel shuttle and light cargo vessel. These are common ships, and a number have been modified into fully fledged frieghters, and serve carry cargo

along the tradelanes of the galaxy.

---

Page designed in Notepad, logo`s done on Personal Paint on the Amiga.

Text completely by FreddyB. Image is by "Bob the Dinosaur", copyright resides with him.

Any complaints, writs for copyright abuse, etc should be addressed to the Webmaster [FreddyB.](#)

