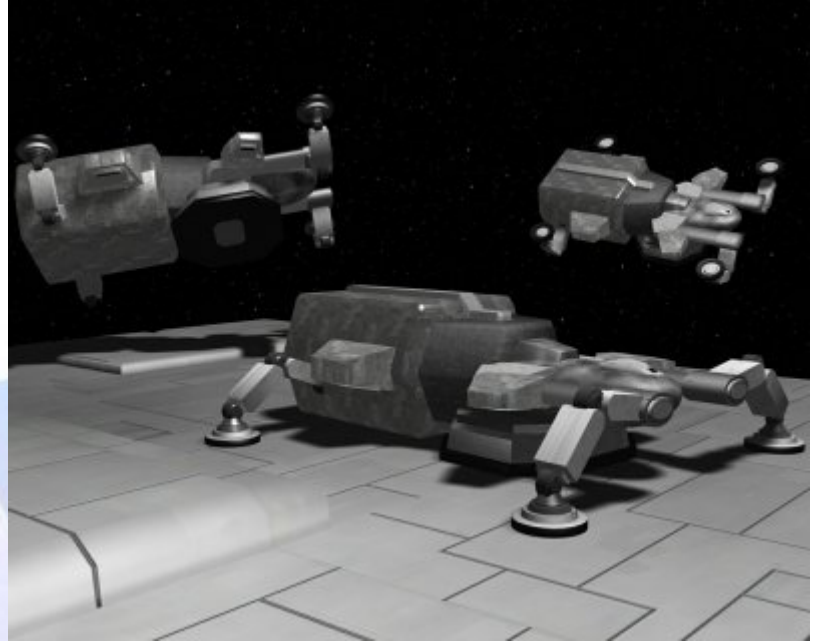


Starships D6 / Griven Empire Boarding

Name: Griven Boarding Pod
Type: Griven Empire Boarding Pod
Scale: Starfighter
Length: 18m
Skill: Space Transports - Griven Boarding Pod
Crew: 1
Crew Skill: Space Transports 5D, Starship Shields 4D, Starship Sensors 4D
Passengers: 50
Consumables: 2 Days
Cargo Capacity: 2 Tonnes
Hyperdrive Multiplier: No
Hyperdrive Backup: No
Nav Computer: N/A
Space: 4
Atmosphere: 225;800kmh
Maneuverability: 4D
Hull: 4D
Shields: 1D
Sensors:
 Passive: 15/0D
 Scan: 30/1D
 Search: 45/2D
 Focus: 2/4D
Weapons:
 Cutting Laser
 Fire Arc: Bottom
 Fire Control: 4D
 Space: 1
 Atmosphere Range: 1-5/15/25m
 Damage: 5D



Description: The Griven Boarding Pod is a vessel used by the Griven Empire to board and capture vessels, although not much more than a passenger compartment with a cutting laser and small engine, this vessel has had a high level of success. The Pods are used against vessels already damaged,

preferably disarmed and drifting, they attach to the vessels hull and begin cutting through the hull to allow their complement of troopers board the enemy vessel and seize control of it. In this way the Griven have captured a number of capital ships and their technology, as well as capturing cargo and supplies boosting the riches of their empire. These poorly armed and slow transport pods are very manueverable however, leading to a good chance that they will avoid enemy and manage to deliver their troops.

Page designed in Notepad, logo`s done on Personal Paint on the Amiga.

Text completely by FreddyB. Image is by "Bob the Dinosaur", copyright resides with him.

Any complaints, writs for copyright abuse, etc should be addressed to the Webmaster [FreddyB.](#)

