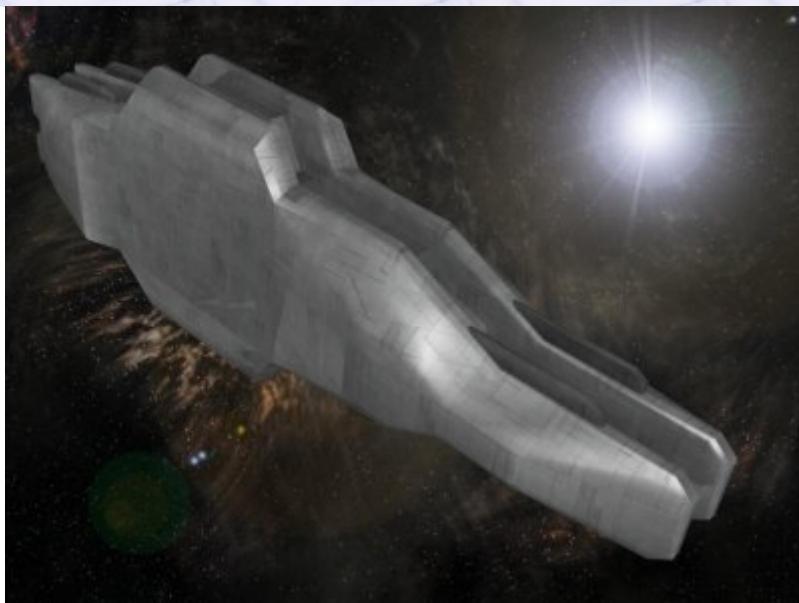


Name: Igola Class Destroyer
 Type: Sluis Van Igola Class Star Destroyer
 Scale: Capital
 Length: 1,450 Meters
 Skill: Capital Ship Piloting: Igola Destroyer
 Crew: 42,514; skeleton 7000/ +20
 Passengers/Troops: 15,000
 Crew Skill: Capital Ship Piloting 5D+1,
 Capital Ship Gunnery 4D+2, Capital Ship
 Shields 4D+1
 Consumables: 5 Years
 Cargo Capacity: 50,000 Tons
 Hyperdrive Multiplier: X1
 Hyperdrive Backup: X10
 Nav Computer: Yes
 Space: 6
 Maneuverability: 1D
 Hull: 6D+2
 Shields: 3D
 Sensors:
 Passive: 50/1D
 Scan: 100/3D
 Search: 200/4D
 Focus: 6/4D+2
 Cloaking Device : No
 Fighters: 84
 Transports: 8



Weapons:
 30 Twin Laser Cannon Turrets
 Scale: StarFighter
 Fire Arc: 13 Front/Left, 13 Front/Right, 4 Back
 Fire Control: 2D
 Space: 1-3/12/25
 Atmosphere Range: 100-300/1.2/2.5km
 Damage: 6D
 50 TurboLaser Batteries
 Scale: Capital
 Fire Arc: 20 Front/Left, 20 Front/Right, 10 Back

Fire Control: 3D

Space: 3-15/36/75

Atmosphere Range: 6-30/36/150km

Damage: 5D

40 Twin TurboLaser Batteries

Scale: Capital

Fire Arc: 16 Front/Left, 16 Front/Right, 8 Back

Fire Control: 3D+2

Space: 3-15/36/75

Atmosphere Range: 6-30/36/150km

Damage: 6D

30 Ion Cannons

Scale: Capital

Fire Arc: 13 Front/Left, 13/Front/Right, 4 Back

Fire Control: 2D+1

Space: 1-10/25/50

Atmosphere Range: 2-20/50/100km

Damage: 4D

10 Tractor beam projectors

Scale: Capital

Fire Arc: 4 Front, 2 Left, 2 Right, 2 Back

Fire Control: 2D

Space: 1-5/15/30

Atmosphere Range: 2-10/30/60km

Damage: 6D

Description: The Igola Class Destroyer is a Star Destroyer design built by the Sluissi at their Sluis Van shipyards to serve in the New Republic Navy. These vessels are the equal of any similar sized vessel in the Imperial fleet, although many feel that it is a weaker design than newer Imperial designs. The interior of the vessel is spacious and well equipped, with large training areas for the troops aboard, large cargo holds and handling facilities and landing hangars for transports and dropships. Due to the slow production speed of the Sluissi not many of these vessels have been built, but those in service have proven themselves in combat and served with distinction leading to the New Republic wanting as many of these starships as the Sluis Van shipyards can produce.

Page designed in Notepad, logo`s done On Personal Paint on the Amiga.

Text completely by FreddyB. Image is by "Bob the Dinosaur", and copyright resides with him.

Any complaints, writs for copyright abuse, etc should be addressed to the Webmaster [FreddyB.](#)