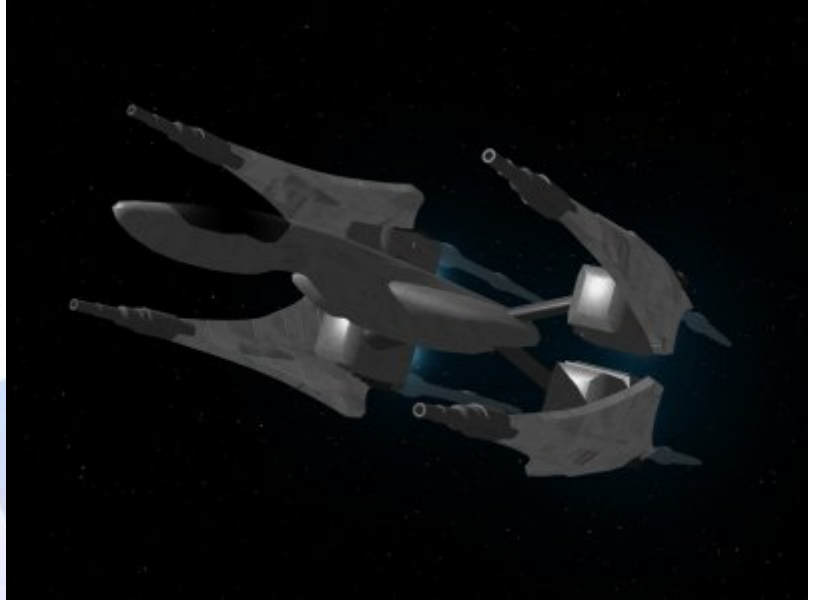


Starships D6 / Compforce Javellin Attack

Name: Javellin Starfighter
Type: Compforce Javellin Attack Starfighter
Scale: Starfighter
Length: 14.8 Meters
Skill: Starfighter Piloting - Javellin
Crew: 1
Crew Skill: Starfighter Piloting 4D+2, Starship
Gunnery 5D, Starship Shields 2D
Consumables: 1 Week
Cost: 80,000 (used); 165,000 (new)
Cargo Capacity: 150kg
Hyperdrive Multiplier: X2
Hyperdrive Backup: N/A
Nav Computer: Limited to 4 Jumps
Space: 7
Atmosphere: 350;1,000kmh
Maneuverability: 2D
Hull: 4D
Shields: 2D
Sensors:
 Passive: 20/0D
 Scan: 40/1D
 Search: 60/2D
 Focus: 3/3D
Weapons:
 4 x Heavy Laser Cannons
 Fire Arc: Front
 Fire Control: 3D+2
 Space: 1-3/12/25
 Atmosphere Range: 100-300/1.2/2.5km
 Damage: 7D



Description: The Javellin is a heavily armed starfighter designed along similar specifications to the X-Wing, with four swivelling Heavy Laser Cannons. These cannons give a wide field of fire, and their targetting systems are very advanced giving the fighter truly excellent fire control, which combined with the power of the four cannons makes the fighter extremely dangerous in combat. The Javellin has sold in

small numbers due to fierce competition in the marketplace, and the poor hyperdrive system the fighter is equipped with. These fighters are used by a few independant worlds during the New Republic era, making the power of the vessel against that of X-Wings, Tie Interceptors and the more advanced vessels which came available in this time period.

Page designed in Notepad, logo`s done on Personal Paint on the Amiga.

Text completely by FreddyB. Image is by "Bob the Dinosaur", copyright resides with him.

Any complaints, writs for copyright abuse, etc should be addressed to the Webmaster [FreddyB.](#)

