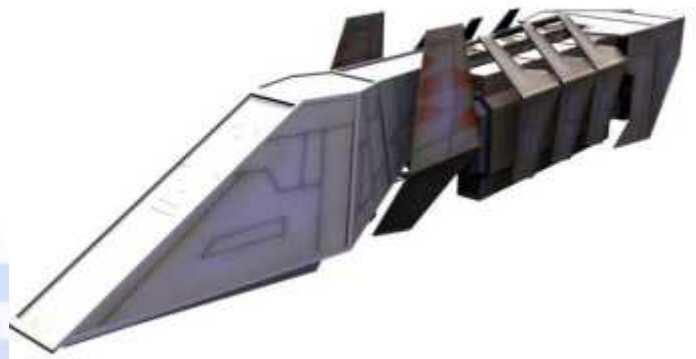


Starships D6 / Kuat Drive Yards Righteous

Name: KDY Righteous Bulk Transport
Type: Kuat Drive Yards Righteous Class Bulk Transport
Scale: Capital
Length: 165 Meters
Skill: Space Transports - Bulk Transport
Crew: 6; Skeleton Crew: 2/+15
Crew Skill: Space Transports 4D, Astrogation 4D
Passengers: 12
Consumables: 1 Year
Cost: 1,000,000 (new); 450,000 (used)
Cargo Capacity: 95,000 Tonnes BR> Hyperdrive
Multiplier: X2
Hyperdrive Backup: N/A
Nav Computer: Yes
Space: 4
Atmosphere: Cannot enter Atmosphere
Maneuverability: 1D
Hull: 4D
Shields: 2D
Sensors:
 Passive: 30/0D
 Scan: 60/1D
 Search: 90/2D
 Focus: 3/3D
Weapons:



Description: Kuat Drive Yards replacement for their older Constant Class Bulk Transports, the Righteous Class is faster and longer ranged with a smaller crew requirement. However these vessels haven't taken off, their lack of removable cargo modules has made them incompatible with systems already in place making the design unpopular. The Empire forced many shipping companies to use these vessels for official contracts with special restrictions, however even this last effort has had little effect especially after the Battle of Endor and the beginning of the slow collapse of Imperial influence across the galaxy.

Page designed in Notepad, logo's done on Personal Paint on the Amiga.

Text completely by FreddyB. Image is from Sci-Fi 3D, copyright resides with the artist.

Any complaints, writs for copyright abuse, etc should be addressed to the Webmaster [FreddyB.](#)

