

Type:

Kost & Ko Factories Otomo OTD class

Space Transport

Scale: Starfighter

Length: 70.2m

Skill: Space Transports - Otomo Transport

Crew: 3; Gunner:1

Crew Skill: varies

Passengers: 13

Consumables: 12 Months

Cargo Capacity: 240 Tonnes

Cost: 26,000 (used)

Hyperdrive Multiplier: X3

Hyperdrive Backup: NA

Nav Computer: Yes

Space: 4

Atmosphere: 225;700kmh

Maneuverability: 0D

Hull: 5D

Shields: 1D

Sensors:

Passive: 15/0D

Scan: 30/1D

Search: 50/2D

Focus: 2/3D

Weapons:

Twin Pulse Wave Cannons

Fire Arc: Front

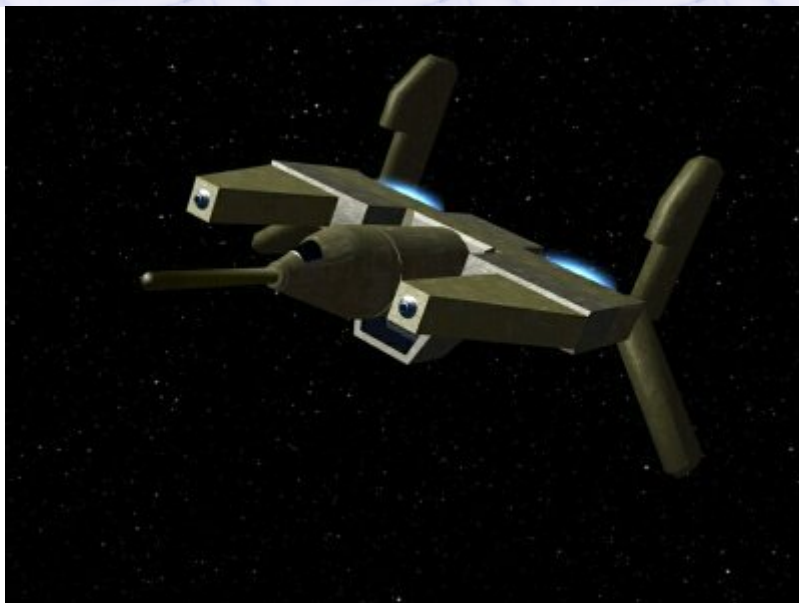
Skill: Starship Gunnery

Fire Control: 1D

Space Range: 1-2/12/20

Atmosphere Range: 100-200/1.2/2km

Damage: 3D



Description: The Otomo Transport is a freighter dating back to the days of the Old Republic, and was built some 3 thousand years ago. These vessels served not only as a vital link between the worlds of the republic, but many served as the personal transports of Jedi Knights and other dignitaries important for forging the galaxy into a cohesive whole. Although larger than most current transport vessels, the Otomo OTD class is not wholly taken up by the ancient technology which powers it, the vessel is also fairly spacious, and has its own small hangar bay capable of carrying a small shuttle or fighter. The Otomo

class was designed to be sturdy and take the rigors of space travel and the dangers of the galaxy, which has made the design last, and many examples of this class of vessel can still be seen crossing the galaxy as they have for many centuries.

---

Page designed in Notepad, logo`s done on Personal Paint on the Amiga.

Text completely by FreddyB. Image is by "Bob the Dinosaur", copyright resides with him.

Any complaints, writs for copyright abuse, etc should be addressed to the Webmaster [FreddyB.](#)