

Name:

Pheonix Transport

Type: Galactech "Pheonix" Heavy Freighter

Scale: Starfighter

Length: 52m

Skill: Space Transports - Pheonix Transport

Crew: 2 + 4 Gunners Skeleton 1/+15

Crew Skill: varies

Passengers: 12

Consumables: 2 Years

Cost: 175,000 (new), 52,000 (used)

Cargo Capacity: 800 Tons

Hyperdrive Multiplier: X1

Hyperdrive Backup: N/A

Nav Computer: Yes

Space: 6

Atmosphere: 350;975kmh

Maneuverability: 2D

Hull: 4D+1

Shields: 3D

Sensors:

Passive: 25/1D

Scan: 50/2D

Search: 75/3D

Focus: 3/4D

Weapons:

4 Medium Laser Cannon Turrets

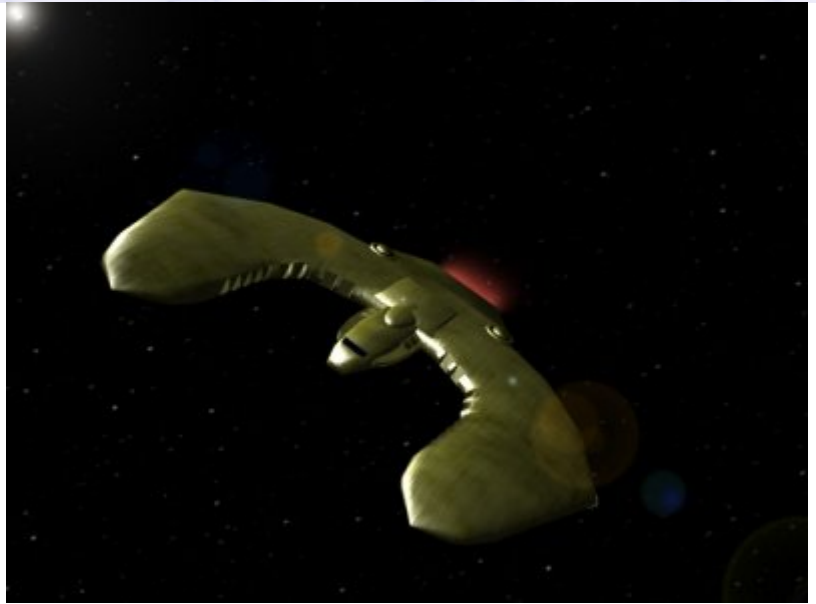
Fire Arc: Turret

Fire Control: 1D+1

Space: 1-3/12/25

Atmosphere Range: 100-300/1.2/2.5km

Damage: 4D



Description: The Pheonix Class Heavy Freighter, sometimes known as the Golden Pheonix for its unusual hull colouration, is a medium transport vessel, falling between light freighters and bulk transports. This design turned out to be very lucrative for Galactech, as its configuration allowed it to carry massive amounts of cargo for such a manueverable and combat effective vessel. Owners found its hull, shields and manueverability were already very good, but most preferred to modify the ships weapon configuration, either to add firepower to the turrets and add variety in weapon load such as missiles and lon weapons, others preferred to remove the need for gunners and slave the weapons to the cockpit,

firelinking them in the process to create superior firepower capability. Which ever way modified, the Pheonix class still managed to carry large quantities of cargo, at high speed, and in relative safety across the galaxy, creating a continued demand for these sleek transport vessels.

---

Page designed in Notepad, logo`s done on Personal Paint on the Amiga.

Text completely by FreddyB. Image is by "Bob the Dinosaur", copyright resides with him.

Any complaints, writs for copyright abuse, etc should be addressed to the Webmaster [FreddyB.](#)