

Name:

SkyBreaker Heavy Transport

Type: Corellian Engineering Corporation

SkyBreaker Heavy Transport

Scale: Capital

Length: 60 Meters

Skill: Capital Ship Piloting - SkyBreaker

Heavy Transport

Crew: 2; Skeleton Crew: 1/+10

Crew Skill: Space Transports 4D,

Astrogation 4D

Passengers: 15

Consumables: 2 Years

Cost: 90,000 (used)

Cargo Capacity: 1000 Tonnes + 4x100 Tonnes

Hyperdrive Multiplier: X2

Hyperdrive Backup: N/A

Nav Computer: Yes

Space: 5

Atmosphere: 300;900kmh

Maneuverability: 1D+2

Hull: 5D

Shields: 1D

Sensors:

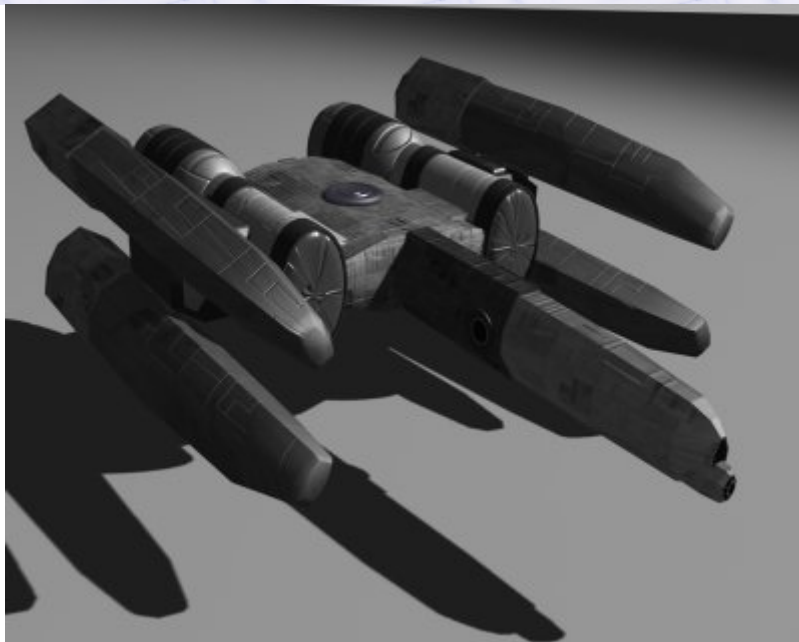
Passive: 30/0D

Scan: 50/1D

Search: 70/2D

Focus: 3/3D+2

Weapons:



Description: These large and fast transport vessels predate the YT series by several decades, but have some resemblance to both these and the Corellian Corvette which replaced it. With a large internal cargo hold and four cargo pods which can be ejected or replaced, this is a roomy transport although obviously not on the scale of the Bulk Transports which carry most of the cargo in the Imperial Era. However in an age of light freighters and medium transports the SkyBreaker was roomy yet fast, although not armed from the factory floor, the SkyBreaker came ready to mount turrets into. Although a decent ship for its era, there were many complaints about the SkyBreaker possibly because times were changing and this vessel was either too large, or too small for most purposes, with neither the weaponry or shielding to defend its cargo and passengers. The passenger accomodation bears mentioning, with a luxury lounge and entertainment area for the passengers and crew as well as a full kitchen and dining area. The Dining

and Entertainment areas are directly above the bridge and come with a spectacular view in front of the vessel, making this a popular vessel to live and work aboard.

---

Page designed in Notepad, logo`s done on Personal Paint on the Amiga.

Text completely by FreddyB. Image is by "Bob the Dinosaur", copyright resides with him.

Any complaints, writs for copyright abuse, etc should be addressed to the Webmaster [FreddyB.](#)