

Assault Land

Cruiser

Type: Trade Federation Assault Land Cruiser (ALC)

Scale: Walker

Length: 15 Meters

Skill: Repulsorlift Operation, Land Cruiser

Crew: 2 + 4 Gunners

Passengers: 20

Cargo Capacity: 1 Ton

Cover: Full

Cost: 20,000 (used)

Maneuverability: 2D

Move: 35, 100 kmh

Altitude Range: Ground-15 Meters

Body Strength: 4D

Weapons:

4 Heavy Laser Cannons (firelinked)

Scale: Walker

Fire Arc: Front

Crew: 2

Skill: Vehicle Blasters

Fire Control: 1D

Range: 50-500/1.5/3km

Damage: 7D

Twin Blaster Cannons

Scale: Speeder

Fire Arc: 1 Front/Left/Back, 1 Front/Right/Back

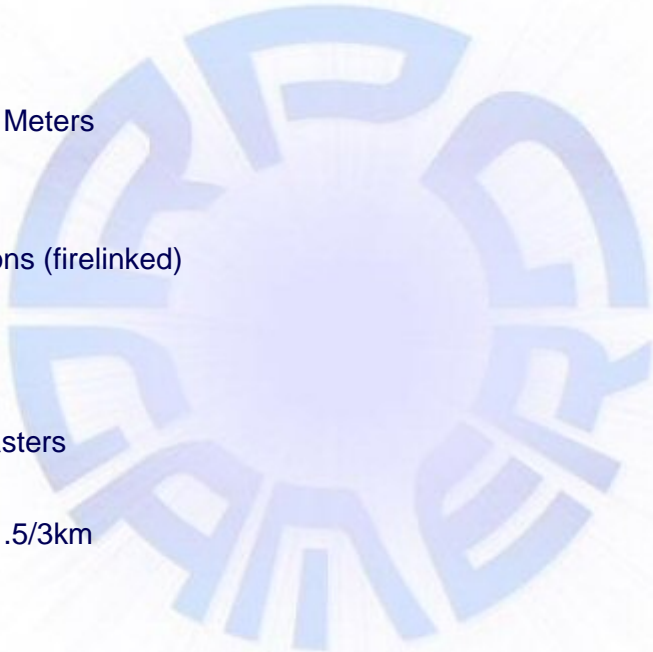
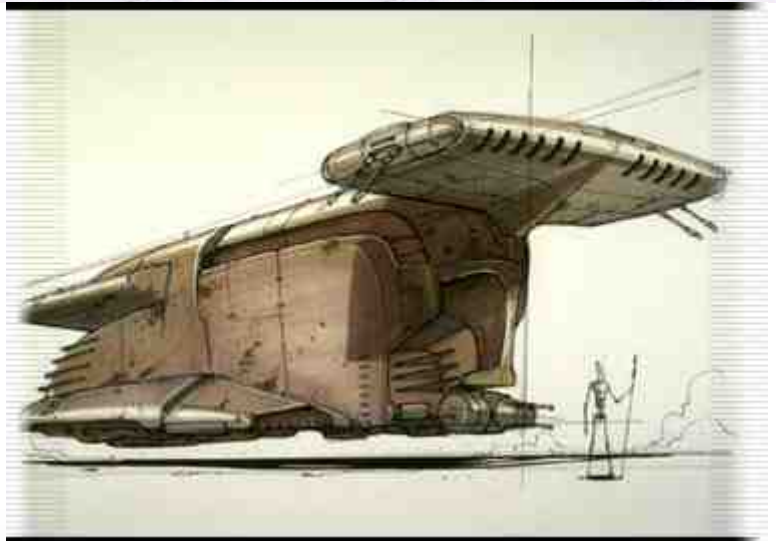
Crew: 1 each

Skill: Vehicle Blasters

Fire Control: 2D

Range: 50-200/1/2km

Damage: 5D



Description: The ALC is a cross between the MTT and AAT, designed to operate as a heavy tank and an armoured personel carrier. The ALC entered service too late to be produced in any great numbers, or to make much of an impact on the outcome of the Clone Wars. However the models that survived have been snatched up by backwater planets for their militia forces, and in this role many pirate copies of the design have been produced. However in comparision to newer designs the ALC is fairly weak, but its low

second hand price attracts poorer purchasers to this dated but reliable design.

---

Page designed in Notepad, logo`s done on Personal Paint on the Amiga.

Text completely by FreddyB. Image is from Lucasfilm, and copyright resides with them.

Any complaints, writs for copyright abuse, etc should be addressed to the Webmaster [FreddyB.](#)

