

## Craft:

Imperial AT-AV

Type: All Terrain Anti-Vehicle Walker (AT-AV)

Scale: Walker

Length: 2.5 Meters long, 3.2 Meters Tall

Skill: Walker Operation, ATPT

Crew: 1

Passengers: 0

Cargo Capacity: 20 kilograms

Cover: Full

Maneuverability: 1D+2

Move: 30, 95 kmh

Body Strength: 1D+2

Weapons:

Heavy Laser Cannon

Fire Arc: Front/Left/Right

Scale: Walker

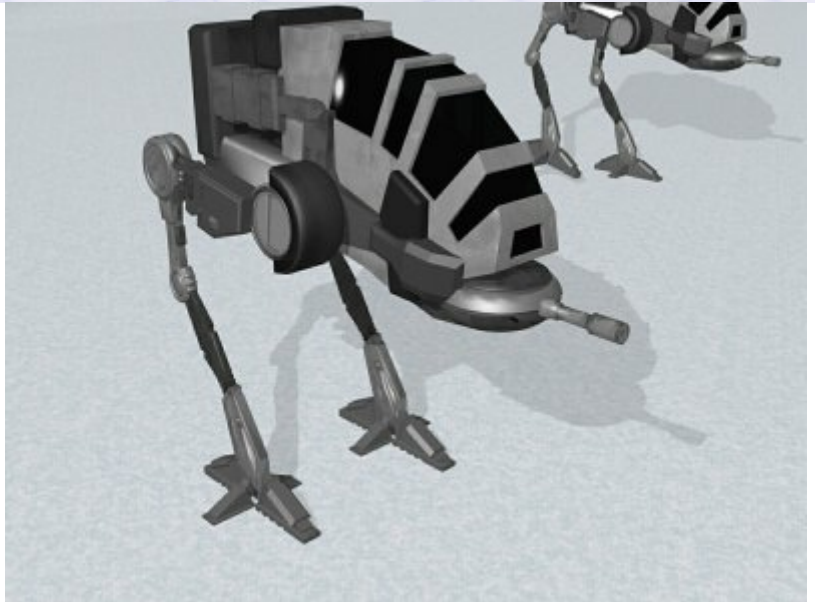
Skill: Vehicle Blasters

Fire Control: 2D

Fire Rate: 1/3

Range: 50-500/1.5/2.5km

Damage: 6D



Description: The Imperial AT-AV is a reworking of the early AT-PT's used during the start of the Clone Wars, designed to take advantage of the good visibility from this design's cockpit. The powerful charging laser cannon fitted onto a swiveling mount at the front of the vehicle allows this small walker to engage vehicles many times its size, although the weakness of its armour and the slow recharge rate of the cannon do mean that it is a vulnerable target for enemy attacks. The AT-AV has been produced in only small numbers, being only tested by various branches of the Imperial Military but never adopted by any of them. They are sometime encountered assigned to low priority bases and units acting as a replacement for heavy artillery or walkers a role to which they perform poorly in and have become extremely unpopular vehicles.

---

Page designed in Notepad, logo's done on Personal Paint on the Amiga.

Text completely by FreddyB. Image is by "Bob the Dinosaur", copyright resides with him.

Any complaints, writs for copyright abuse, etc should be addressed to the Webmaster [FreddyB.](#)