

Name: C-

3 Passenger Liner

Type: Leonore Luxury Liners Inc. C-3

Passenger Liner

Scale: Capital

Length: 400 Meters

Skill: Space Transports - C-3 Liner

Crew: 290; Skeleton Crew: 50/+10

Crew Skill: Space Transports 4D,
Astrogation 4D, Starship Shields 4D

Passengers: 1000

Consumables: 6 Months

Cost: 8 Million (new), 3.5 Million (used)

Cargo Capacity: 5000 Tonnes

Hyperdrive Multiplier: X2

Hyperdrive Backup: N/A

Nav Computer: Yes

Space: 5

Atmosphere: 300;850kmh

Maneuverability: 1D

Hull: 3D

Shields: 3D

Sensors:

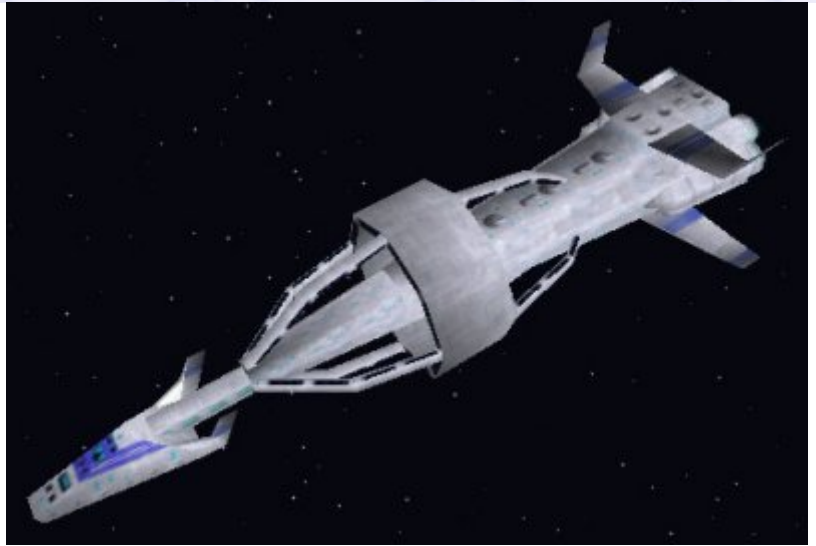
Passive: 30/0D

Scan: 50/1D

Search: 70/2D

Focus: 3/3D

Weapons:



Description: The C-3 Passenger Liner is one of the most common passenger transportation vessels in the galaxy, providing an affordable but luxurious method of travelling from system to system and many millions of beings cross the galaxy each day aboard one of these ships. It is rumoured that the Emperor himself owned one of these ships and used it as a personal transport vessel, however given the inability of this design to defend itself it is unlikely that he used it at any time after the Galactic Civil War began. C-3's are common sights throughout the galaxy, and remain in production to this day even if they do make tempting and easy targets for pirates.

Page designed in Notepad, logo`s done on Personal Paint on the Amiga.

Text completely by FreddyB. Image is from Tie Fighter, copyright resides with LucasArts.

Any complaints, writs for copyright abuse, etc should be addressed to the Webmaster [FreddyB.](#)