

Name:

Rifleman Gunship

Type: Corelliarms Rifleman Class Gunship

Scale: Capital

Length: 125 Meters

Skill: Capital Ship Piloting: Rifleman Gunship

Crew: 353; Skeleton Crew: 115/+10

Crew Skill: Astrogation 4D+1, Capital Ship

Piloting 5D+2, Capital Ship Shields 4D+1,

Capital Ship Gunnery 5D+2, Sensors 5D

Passengers: 150

Cargo Capacity: 3,500 Tons

Consumables: 2 Years

Cost: 3.8 Million (new); 1.6 million (used)

Hyperdrive Multiplier: X2

Hyperdrive Backup: X16

Nav Computer: Yes

Maneuverability: 1D

Space: 5

Atmosphere: 300; 900kmh

Hull: 3D+1

Shields: 2D

Sensors:

Passive: 40/1D

Scan: 80/2D

Search: 120/3D

Focus: 3/4D

Fighters: 6 Starfighters

Shuttles: 1 Shuttle

Weapons:

60 Twin Turbolaser Turrets *

Scale: Capital

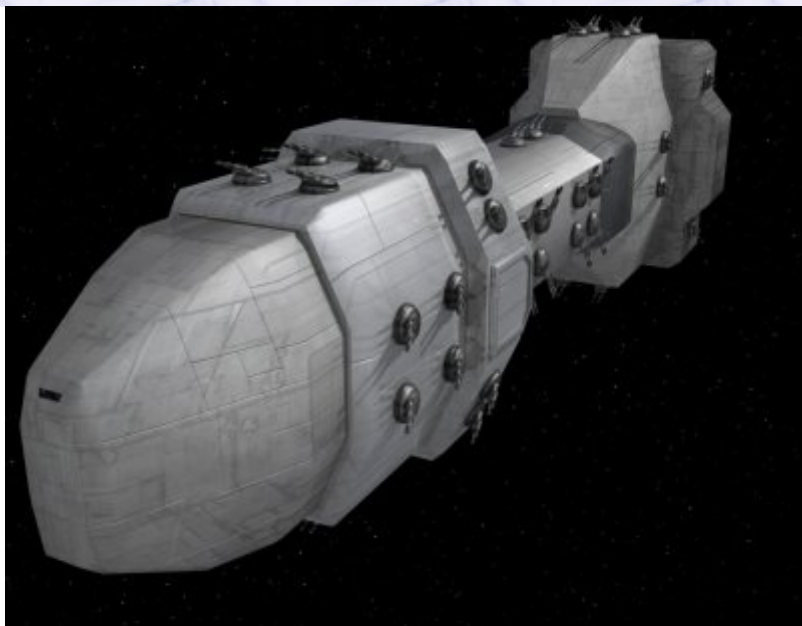
Fire Arc: Turret

Fire Control: 2D

Space: 3-15/36/75

Atmosphere: 6-30/72/150 Km

Damage: 5D



* : Although all of the Riflemans weapons are considered to be turreted, it cannot bring more than 40 to bear on any particular fire arc.

Description: Designed to provide a tactical advantage infleet engagements within starsystems, the Rifleman Gunship usually operates in planetary orbit either reinforcing planetside weapon emplacements, or firing against them in support of invading forces. The Rifleman has an extremely potent weapons load for a vessel of its size, and can bring a large percentage of its weapons to bear on targets in any fire arc which gives it a great advantage over vessels which have to manuever to fire their weapons at enemy vessels. Rifleman Gunships were introduced shortly after the Battle of Yavin, but were not produced in large numbers until after the fall of Emperor Palpatine, and proved to be decisive in a number of engagements leading to their purchase by both independant planetary governments as well as the major powers in the Galactic Civil War with the only complaint about the design being its weaker than average hull.

Page designed in Notepad, logo`s done on Personal Paint on the Amiga.

Text completely by FreddyB. Image is by "Bob the Dinosaur", copyright remains with him.

Any complaints, writs for copyright abuse, etc should be addressed to the Webmaster [FreddyB.](#)