

Name: KDY

Righteous Bulk Transport

Type: Kuat Drive Yards Righteous Class Bulk Transport

Scale: Capital

Length: 165 Meters

Skill: Space Transports - Bulk Transport

Crew: 6; Skeleton Crew: 2/+15

Crew Skill: Space Transports 4D, Astrogation 4D

Passengers: 12

Consumables: 1 Year

Cost: 1,000,000 (new); 450,000 (used)

Cargo Capacity: 95,000 Tonnes BR> Hyperdrive Multiplier: X2

Hyperdrive Backup: N/A

Nav Computer: Yes

Space: 4

Atmosphere: Cannot enter Atmosphere

Maneuverability: 1D

Hull: 4D

Shields: 2D

Sensors:

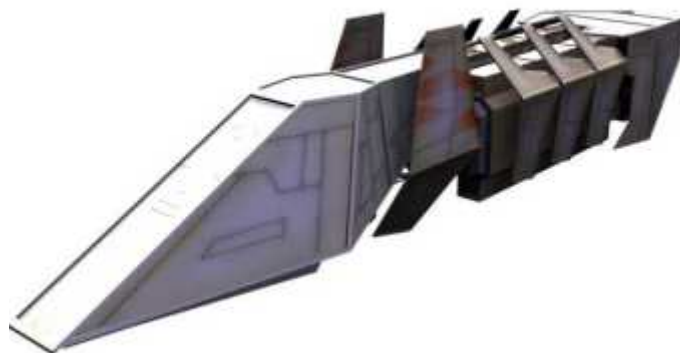
Passive: 30/0D

Scan: 60/1D

Search: 90/2D

Focus: 3/3D

Weapons:



Description: Kuat Drive Yards replacement for their older Constant Class Bulk Transports, the Righteous Class is faster and longer ranged with a smaller crew requirement. However these vessels haven't taken off, their lack of removable cargo modules has made them incompatible with systems already in place making the design unpopular. The Empire forced many shipping companies to use these vessels for official contracts with special restrictions, however even this last effort has had little effect especially after the Battle of Endor and the beginning of the slow collapse of Imperial influence across the galaxy.

---

Page designed in Notepad, logo's done on Personal Paint on the Amiga.

Text completely by FreddyB. Image is from Sci-Fi 3D, copyright resides with the artist.

Any complaints, writs for copyright abuse, etc should be addressed to the Webmaster [FreddyB.](#)