

Name:

KDY Land Barge
Type: Kuat Drive Yards HAVx T3 Land Barge
Scale: Walker
Length: 15 Meters
Skill: Ground Vehicle Operation; Land Barge
Crew: 4 + 2 Gunners
Passengers: 15
Cargo Capacity: 1 Ton
Cover: Full
Maneuverability: 1D+2
Move: 45, 130 kmh
Altitude Range: Ground
Body Strength: 3D
Weapons:

2 Heavy Laser Cannon Turrets

Scale: Walker

Fire Arc: Turret

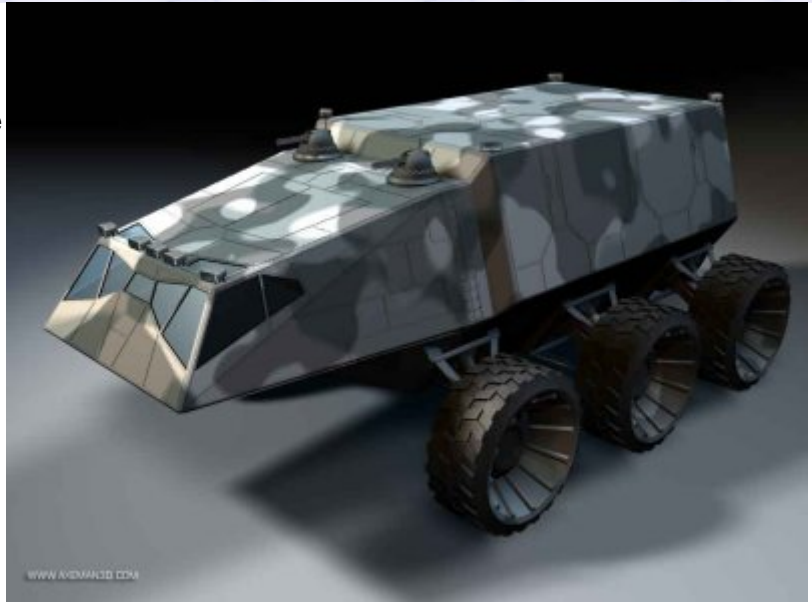
Crew: 1 Each

Skill: Vehicle Blasters

Fire Control: 2D

Range: 50-200/500/1.5km

Damage: 4D



Description: The Land Barge was released shortly before the beginning of the Clone Wars, designed to complement the ageing Juggernaut armoured land cruisers that had served the military across the galaxy for decades. The Land Barge was designed to serve pretty much the same purpose, carrying troops and cargo on the battlefield, while acting as armoured support to infantry. Carrying much the same weaponry as the Juggernaut, but deployed as two independently operated turrets, the Land Barge could either concentrate its firepower or deal with multiple targets, making the vehicle far more flexible. The Land Barge was a great success, but however was phased out of production quickly to make room for the manufacture of walkers which fitted far better with the emerging Galactic Empire's doctrine of terror.

Page designed in Notepad, logo's done on Personal Paint on the Amiga.

Text completely by FreddyB. Image is by www.axeman3d.com, copyright resides with the artist.

Any complaints, writs for copyright abuse, etc should be addressed to the Webmaster [FreddyB.](#)