

Type:

Nartissue Action Transport

Scale: Capital

Length: 80.5m

Skill: Space Transports - Action Transport

Crew: 15

Crew Skill: varies

Passengers: 25

Consumables: 2 Years

Cargo Capacity: 15,000 Tonnes

Cost: 250,000 (used)

Hyperdrive Multiplier: X5

Hyperdrive Backup: NA

Nav Computer: Yes

Space: 3

Maneuverability: 0D

Hull: 3D

Shields: 1D

Sensors:

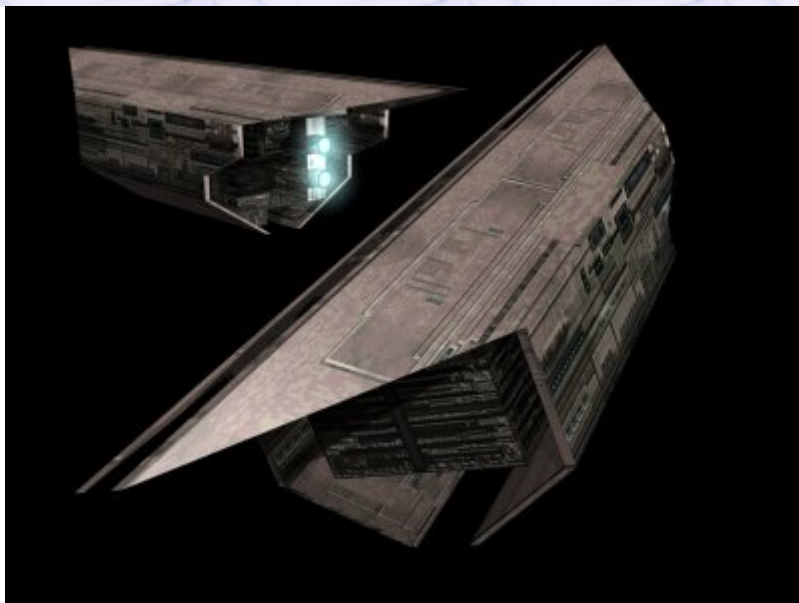
Passive: 15/0D

Scan: 30/1D

Search: 45/2D

Focus: 2/3D

Weapons:



Description: The Nartisstue Action Transport is a bulk transport vessel which has served as a reliable and large cargo vessel for decades, although unarmed and virtually useless in a battle these ships are seen as an easy job by most spacers since they rarely venture off well patrolled routes. The crew facilities are comfortable, and the ease of loading of cargo containers makes this popular with corporations as well as their crews and they are often seen dropping off or loading cargo in orbital facilities around heavily populated worlds.

---

Page designed in Notepad, logo`s done on Personal Paint on the Amiga.

Text completely by FreddyB. Is rendered by "Bob the Dinosaur", copyright remains with "Flavid" from Flavids OPT website.

Any complaints, writs for copyright abuse, etc should be addressed to the Webmaster [FreddyB.](#)