

Name:

Nubian Armed Transport

Type: Nubian W Type Transport

Scale: Starfighter

Length: 39m Long, 91 Meters Wide

Skill: Space Transports - W Type Transport

Crew: 2, Skeleton 1/+8

Crew Skill: varies

Passengers: 20

Consumables: 6 Months

Cost: 150,000 (used)

Cargo Capacity: 250 Tons

Hyperdrive Multiplier: X1

Hyperdrive Backup: X10

Nav Computer: Yes

Space: 5

Atmosphere: 295;850kmh

Maneuverability: 1D+1

Hull: 3D+1

Shields: 2D

Sensors:

Passive: 25/1D

Scan: 40/1D+2

Search: 55/2D+2

Focus: 3/3D+1

Weapons:

Twin Laser Cannons

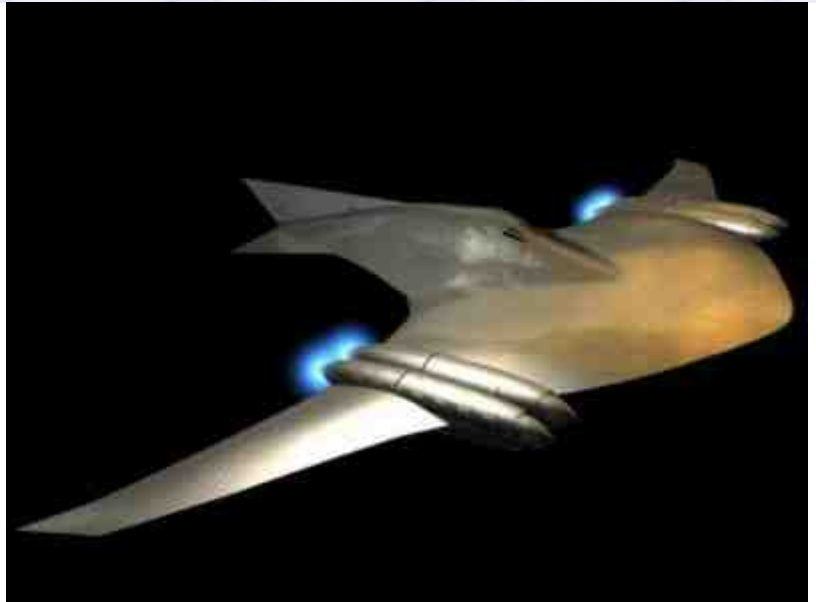
Fire Arc: Front

Fire Control: 2D

Space: 1-2/10/20

Atmosphere Range: 100-200/1/2km

Damage: 5D



Description: The W Type transport was a last effort for the shipyards of the planet Nubia to retain their hold on the luxury ship market which had been slipping away as the galaxy started down the path towards civil war. With assassination attempts on officials and senators and more heavily armed and shielded vessel was required, and the W Type was designed to fill this role. The W Type remains a ship of a bygone era, with luxurious fittings, and a generous cargo hold for a personal transport ship, the few that remain are often customised to protect their rich owners, and a sad few have been stripped of their

luxurious appointments and have been reduced to mere cargo vessels.

---

Page designed in Notepad, logo`s done on Personal Paint on the Amiga.

Text completely by FreddyB. Image is from TheForce.net, copyright remains with Lucasfilm.

Any complaints, writs for copyright abuse, etc should be addressed to the Webmaster [FreddyB.](#)