

# RPGGamer.org Starships D6 / Colonial Shuttle (Original)

## Colonial Shuttle

Craft: Colonial Shuttle

Type: Colonial Cargo and Passenger Craft.

Scale: Starfighter

Dimensions:

-Length: 20.5m

-Width: 10.7m

Skill: Space Transport Piloting: Colonial Shuttle

Crew: 1 or 2 (pilot and/or co-pilot)

Crew Skill:(?)

Passengers: 40 troops; 80-100 if crammed in tight!

Cargo Capacity: 100 metric tons (if no passengers)

Consumables: 2 weeks (in emergency gear)

Cost: 500,000 colonial credits (new); 200,000 (used)

Hyperdrive: N/A

Nav Computer: Yes (for intrasystem travel and guidance from its baseship)

Maneuverability: 1D

Space: 6

Atmosphere: 330; 950kmh

Hull: 5D+2

Shields: N/A

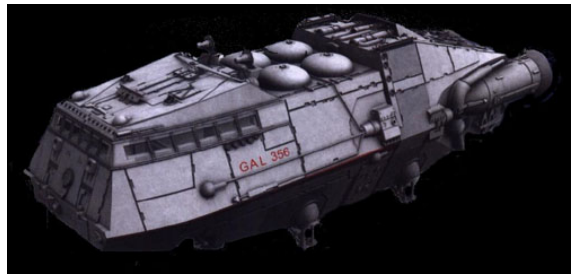
Sensors:

-Passive: 30/0D

-Scan: 45/1D

-Search: 50/2D

-Focus: 3/3D+1



## NOTES:

-Most of the shuttle footage used in the series is stock footage from the series premiere, "Saga of a Star World". The shuttle featured in that episode was labeled "GAL 356", leaving the later impression that all shuttles in the fleet, whether from Galactica or Pegasus, have the markings "GAL 356".

-In the Re-imagined Series, a Colonial shuttle is seen at the start of the Miniseries as it ferries the Colonial Fleet's Armistic Officer from Picon Fleet Headquarters to Armistice Station.

-Also in the Re-imagined Series, another shuttle of this type is seen in the Galactica exhibition in the Miniseries, while working models are still used in the Fleet (The Woman King). Whether this is an indication that such shuttles are used aboard Galactica is unknown.

## DESCRIPTION:

The Colonial Shuttle is a large, twin-engined cargo craft. The shuttle is unarmed, but is capable of

carrying a landram (or ) and cargo in addition to a crew compliment.

Shuttles are equipped with a loading ramp that allows for rapid deployment of the stowed vehicle (The Gun on Ice Planet Zero). Shuttles can also be used for deploying parachute troops, dropping out of the shuttle from a special chamber (The Living Legend, Part II).

In the hours after the Cylon attack on the Colonies, shuttles of this type ferried survivors from ships in the new civilian fleet to Galactica (Saga of a Star World) for medical treatment ().

While the cockpit has seating for two pilots, the rear compartment has ample room for large numbers of civilian passengers.

In addition, shuttles are outfitted with emergency channels, which relay telemetry to their home base on the condition of the ship (The Gun on Ice Planet Zero, part I).

---

Page designed in Notepad, Logo`s done in Personal Paint on the Commodore Amiga

All text and stats by Hellstormer, HTML and logos done by FreddyB

Images stolen from an unknown website at some remote time in the past.

Any complaints, writs for copyright abuse, etc should be addressed to the Webmaster [FreddyB](#).