

# RPGGamer.org Starships D6 / Earth Alliance Starfury

## Starfuries

The Earth Alliance Starfury-class fighters are uniquely designed for space combat. With the pilot(s) located in the center, and four engines located at the end of four "wings", the Starfury is amazingly maneuverable. The Pilot "stands up" in the cockpit, which is the best position for most accelerations.

The design itself is not very new, it existed before the war, but upgrades are continually made.

There are 4 known types of Starfuries:

The standard light Starfury is basically the same model as the one used in the war, but with some upgrades. It is lightly armed and protected, but very quick and maneuverable. The stats are as follows:

Craft: Earth Alliance Starfury

Type: Space superiority fighter

Scale: Starfighter

Length: 6 meters

Width: 10 meters

Skill: starfighter piloting: Starfury

Crew: 1

Crew Skill: Varies widely

Cargo Capacity: 10 kilograms

Consumables: 3 days

Manuverability: 5D

Space: 10

Hull: 3D

Sensors:

Passive: 25/1D

Scan: 50/2D

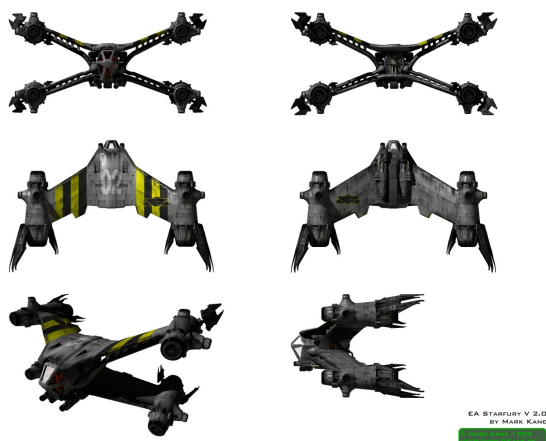
Search: 75/3D

Focus: 5/4D

Weapons:

2 Mass Driver Cannons (fire-linked)

Fire Arc: Front



Fire Control: 2D  
Space Range: 1-3/12/25  
Atmosphere Range: 100-300/1.2/2.5 km  
Damage: 5D  
Grappling Hook  
Fire Arc: Back  
Range: 2

The heavy Starfury is a two-seater (the gunner is positioned looking back) that is better armed and protected, but slower than the light Starfury. The stats are the same as the light Starfury with the exception of the following:

Crew: 1; Gunners: 1; Skeleton: 1/+5  
Space: 8  
Hull: 4D  
2 Mass Driver Cannons (fire-linked)  
Fire Arc: Front  
Crew: 1  
Fire Control: 2D  
Space Range: 1-3/12/25  
Atmosphere Range: 100-300/1.2/2.5 km  
Damage: 6D

The Black Omega Starfuries are advanced models that are stealthier. They are mostly used on "sensitive" missions, and are always piloted by members of Psi-Corps. They are easily recognized by the white omega letter painted on top. The stats are the same as the light Starfury with the exception of the following:

Sensor Mask: +2D to sensor operator's difficulty to detect Starfury.

The newest Starfury derivative is the Thunderbolt. It is very different from the "normal" starfuries in that it is much more aerodynamic, capable of atmospheric flight as well as space flight. It has wings mounted on the engines that are folded out during atmospheric flight. It is also equipped with a powerful rapid fire cannon, and it has a crew of two, with the co-pilot sitting behind the pilot. The stats are the same as the light Starfury with the exception of the following:

Craft: Earth Alliance Thunderbolt  
Length: 15 meters  
Crew: 1; Gunners: 1; Skeleton: 1/+5  
Manuverability: 4D+2  
Space: 11

Atmosphere: 505; 1,325 kmh

Hull: 3D+2

2 Turbo-Mass Driver Cannons (fire-linked)

Fire Arc: Front

Crew: 1

Fire Rate: 2

Fire Control: 2D

Space Range: 1-3/12/25

Atmosphere Range: 100-300/1.2/2.5 km

Damage: 5D+2

---

Page designed in Notepad, Logo`s done in Personal Paint on the Commodore Amiga

All text and stats by Ryan Matheny, HTML and logos done by FreddyB

Images stolen from an unknown website at some remote time in the past.

Any complaints, writs for copyright abuse, etc should be addressed to the Webmaster [FreddyB](#).