

Craft: Minbari Federation War Cruiser

Type: War cruiser

Scale: Capital

Length: 300 meters

Skill: Capital ship piloting: Minbari Cruiser

Crew: 604, gunners: 28, skeleton: 40/+5

Crew Skill: Astrogation 4D+2, capital ship gunnery 5D, capital ship

 piloting 5D, sensors 4D

Passengers: 150 (troops and/or Rangers)

Cargo Capacity: 2,000 metric tons

Consumables: 4 years

Hyperdrive Multiplier: x1

Nav Computer: Yes

Manuverability: 1D

Space: 6

Hull: 10D

Sensors:

 Passive: 150/0D

 Scan: 200/1D

 Search: 300/2D

 Focus: 10/3D

Weapons:

6 Neutron Cannons

 Fire Arc: 2 front, 2 left, 2 right

 Crew: 1

 Skill: Capital ship gunnery

 Fire Control: 4D

 Space Range: 1-10/25/50

 Atmosphere Range: 2-20/50/100 km

 Damage: 10D

12 Fusion Lasers

 Fire Arc: 3 front, 3 left, 3 right, 3 back

 Crew: 1

 Skill: Capital ship gunnery

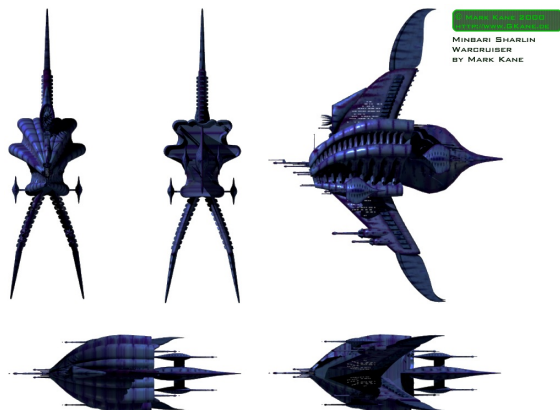
 Fire Rate: 2

 Fire Control: 4D

 Space Range: 1-3/12/25

 Atmosphere Range: 2-6/24/50 km

 Damage: 6D



6 Missile Batteries

Fire Arc: 2 front, 2 left, 2 right

Crew: 1

Skill: Capital ship gunnery

Fire Control: 3D

Space Range: 1-3/12/20

Atmosphere Range: 2-6/24/40 km

Damage: 9D

4 Tractor Beam Projectors

Fire Arc: 1 front, 1 left, 1 right, 1 back

Crew: 1

Skill: Capital ship gunnery

Fire Control: 4D

Space Range: 1-5/15/30

Atmosphere Range: 2-10/30/60 km

Damage: 6D

Starfighter Complement: 1 squadron (Minbari Fighters)

Game Note: Minbari War Cruiser's have a special type of anti-targetting shields which prevent attacking ships from locking onto it. When fighting a Minbari War Cruiser, reduce ALL fire control to 0D.

The Minbari Warcruiser is the most powerful ship among the younger races. Its beam weapon is very powerful, vaporizing most fighters with one quick shot, and slicing larger ships. The war cruiser is incredibly large, it is at least 1.6 km tall. These ships were used with great effectiveness in the Earth-Minbari war, where they almost destroyed all of Earth's forces. There is of course artificial gravity on board. The war cruiser also carries a complement of Minbari Fighters. The "Grey Council" (the leaders of the Minbari) also reside on a special war cruiser.

Page designed in Notepad, Logo`s done in Personal Paint on the Commodore Amiga

All text and stats by Ryan Matheny, HTML and logos done by FreddyB

Images stolen from an unknown website at some remote time in the past.

Any complaints, writs for copyright abuse, etc should be addressed to the Webmaster [FreddyB](#).