

## Starships D6 / Harrow-Class Star Destroyer

Harrow-Class Star Destroyer

Type: Harrow-Class Star Destroyer

Scale: Capital

Length: 910 meters

Skill: Capital ship piloting: Star Destroyer

Crew: Skeleton:1785/+15; total: 4798; gunners: 402

Passengers: 1,500 (troops)

Cargo Capacity: 9,400 metric tons

Consumables: 4 years

Cost: Not available for sale

Hyperdrive Multiplier: x1

Hyperdrive Backup: x15

Nav Computer: Yes

Maneuverability: 1D

Space: 4

Atmosphere: 280;800kmh

Hull: 4D+2

Shields: 3D+1

Sensors:

Passive: 40/1D

Scan: 70/2D

Search: 150/3D

Focus: 4/3D+2

Carries:

10 AT-AT Walkers

10 AT-ST Walkers

2 Squadrons of TIE Advanced Fighters

1 Squadrons of Scimitar Fighter-Bombers

3 Delta-Class Dx-9 Stormtrooper Transports

2 Lambda-Class Shuttles

Weapons:

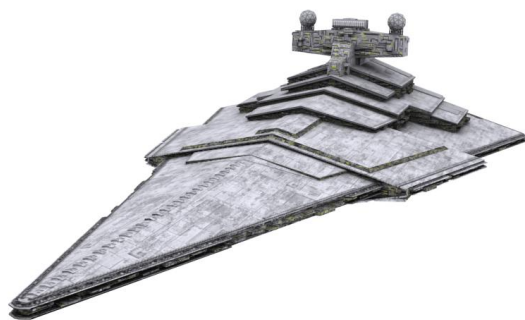
25 Turbolaser Cannons

Fire Arc: 5 front, 10 left, 10 right

Crew: 2

Skill: Capital Ship Gunnery

Fire Control: 3D



Space Range: 3-15/35/75  
Atmosphere Range: 6-30/70/150  
Damage: 2D+2

#### 25 Double Turbolaser Cannons

Fire Arc: 5 front, 10 left, 10 right  
Crew: 3  
Skill: Capital Ship Gunnery  
Fire Control: 3D  
Space Range: 3-15/35/75  
Atmosphere Range: 6-30/70/150  
Damage: 3D+1

#### 12 Ion Cannons

Fire Arc: 2 front, 5 left, 5 right  
Crew: 5  
Skill: Capital Ship Gunnery  
Fire Control: 3D+2  
Space Range: 2-10/25/50  
Atmosphere Range: 4-20/50/100  
Damage: 4D

#### 10 Tractor Beam Projectors

Fire Arc: 6 front, 2 left, 2 right  
Crew: 2 (2), 4 (2), 10 (6)  
Skill: Capital Ship Gunnery  
Fire Control: 4D  
Space Range: 1-5/15/30  
Atmosphere Range: 2-10/30/60km  
Damage: 5D

Description: The Harrow-class Star Destroyer is actually nothing more than a heavily modified Victory I-class Star Destroyer. During the Galactic Civil War, the Victory I-class Star Destroyer Harrow was badly damaged and had difficulty withdrawing for major repairs. In the nearest shipyard, there were not sufficient parts for the older design, so the Imperials used other types of spare parts and components to satisfy the need. The hull was changed in some places and the redesign took a modified form. The atmosphere wings were largely maintained, whereas the armor was reinforced. The Harrow was now powered by two primary engines and two vertically-lined secondary thrusters and the vessel had a single docking bay.

After a few weeks in the Dock, the destroyer once again took part in regional skirmishes. The Imperials quickly found out that the changes the shipyard workers had implemented increased the power and strength of the Victory I-class Star Destroyer considerably. After the end of the conflict the Harrow was investigated closely by Imperial technicians and after a few modifications a new Star Destroyer class was born. In honor of the prototype, the class was called the Harrow.

The Harrow was commanded by Captain Marl Semtin. Years later, it was used in an attempt to

recover a cache of loot and weapons stored by Sate Pestage on Tatooine shortly after the Battle of Endor. During this attempt, the Harrow saw multiple engagements with Rogue Squadron, until suffering a fatal explosive decompression as a result of several well-placed proton torpedoes from an X-wing of that squadron.

---

Page designed in Notepad, Logo`s done in Personal Paint on the Commodore Amiga

All text, HTML and logos done by FreddyB

Images stolen from an unknown website at some remote time in the past.

Any complaints, writs for copyright abuse, etc should be addressed to the Webmaster [FreddyB](#).