

Craft: Yag'Dhul SpaceWorks Wavecrest-class Frigate

Type: Attack frigate

Scale: Capital

Length: 400 meters

Skill: Capital Ship Piloting: Wavecrest frigate

Crew: 2,455; Gunners: 140 , Skeleton Crew: 980 / +15

Crew Skill: Astrogation 5D+2, Capital Ship Piloting 4D+2,

Capital Ship Gunnery 5D+1, Capital Ship Shields 4D+1,

Sensors 4D+1

Passengers: 500 (troops)

Cargo Capacity: 7,500 tons

Consumables: 1 year

Cost: Not available for sale

Hyperdrive Multiplier: x0.85

Hyperdrive Backup: x8

Nav Computer: Yes

Maneuverability: 1D+1

Space: 7

Hull: 4D+2

Shields: 2D+2

Sensors:

Passive: 30/1D

Scan: 50/2D

Search: 100/3D

Focus: 4/4D

Fighters: 60 droid starfighters (or 24 manned starfighters)

Shuttles: 2 Shuttles

Transports: 1 Transport

Weapons:

8 Heavy Turbolaser Batteries

Fire Arc: 4 front/left, 4 front/right

Crew: 4 each

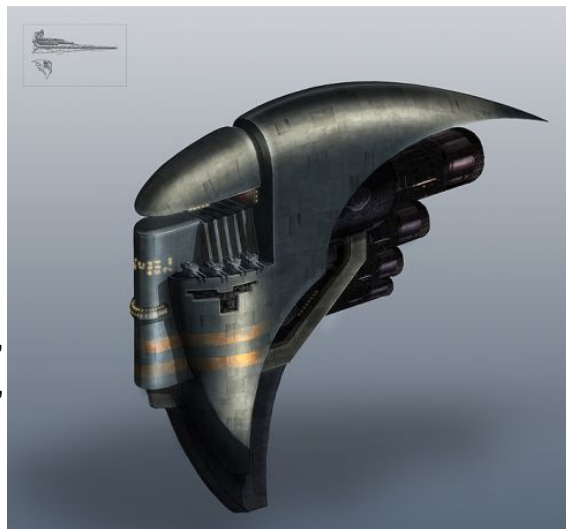
Fire Control: 2D

Space Range: 3-15/36/75

Atmosphere Range: 6-30/72/150 Km

Damage: 6D

16 Turbolaser Cannons



Fire Arc: 4 front, 4 left, 4 right, 4 back  
Crew: 2 (12), 3 (4)  
Fire Control: 2D  
Space Range: 3-15/36/75  
Atmosphere Range: 6-30/72/150 Km  
Damage: 4D

18 Quad Laser Cannons  
Scale: Starfighter  
Fire Arc: 6 front, 6 left, 6 right  
Crew: 1 (12), 2 (6)  
Skill: Starship Gunnery  
Fire Control: 2D  
Space Range: 1-3/12/25  
Atmosphere Range: 1-3/12/25 Km  
Damage: 5D

8 Concussion Missile Tubes  
Fire Arc: 4 front, 2 left, 2 right  
Crew: 6 each  
Fire Control: 3D  
Space Range: 2-12/30/60  
Atmosphere Range: 200-1.2/3/6km  
Damage: 7D

#### Description:

When the Body Calculus declared the Givin Domain's allegiance to the Confederacy, the Separatist Council requested any military aid the Givin could provide. The Wavecrest attack frigate was one of the first designs the renowned starship engineers of Yag'Dhul provided for the CIS fleet. Powerful weapons and a fast drive system made the Wavecrest a formidable opponent for the escorts and light destroyers of the Republic. The majority of the vessels were produced at Yag'Dahl's shipyards and partially crewed by Givin, but the design schematics were openly provided to the Separatists for construction at alternate sites. While identical in every other way, the hyperdrives of the non-Givin constructed frigates couldn't match the efficiency of the original model (x1 hyperdrive). When Givin were not available as crew, the Separatists used recruited Duros, Verpine, and other mathematically gifted races for key shipboard operations.

While not nearly as numerous as the warships of the major corporate powers of the CIS, the Wavecrest frigate was still commonly seen in limited numbers in many CIS fleets. Skirmish lines of the attack frigates acted as fast-response units, quickly hitting targets of opportunity faster than most Republic tacticians expected. General Grievous was known to arm Wavecrest frigates with warheads containing biological agents, and their quick-strike capability could devastate any lightly defended population centers.

By the end of the Clone Wars, much of the Givin's military shipbuilding capabilities were crippled by Republic attacks. Afterwards, the Wavecrest frigate was rarely seen in most of the galaxy. The one exception was in Hutt Space, where the notorious crime lords purchased the Wavecrest's schematics from a deserting Separatist construction chief. Built at the Hutts' shadow shipyards, almost all the systems of the knock-off warships suffered from substandard manufacturing. In spite of this, the attack frigate served the Hutts well for decades, still a common sight guarding the key worlds of Hutt Space after the death of the Emperor and rise of the New Republic.

---

Page designed in Notepad, Logo`s done in Personal Paint on the Commodore Amiga

All text and stats by Weston, HTML and logos done by FreddyB

Images stolen from an unknown website at some remote time in the past.

Any complaints, writs for copyright abuse, etc should be addressed to the Webmaster [FreddyB](#).