

# RPGGamer.org Starships D6 / Galactic Terran Vasudan

Name: GTVA Colossus

Type: Galactic Terran Vasudan Alliance Colossus Class  
SuperDestroyer

Scale: Capital

Length: 6166 Meters

Skill: Capital Ship Piloting: Colossus

Crew: 30,000, skeleton 2,000/ +20

Passengers/Troops: 10,000

Crew Skill: Capital Ship Piloting 5D+1, Capital Ship Gunnery  
4D+2, Capital Ship Shields 4D+1

Consumables: 5 Years

Cargo Capacity: 75,000 Tons

Hyperdrive Multiplier: X1

Hyperdrive Backup: X10

Nav Computer: Yes

Space: 2

Maneuverability: 0D

Hull: 20D

Shields: 0D

Sensors:

Passive: 50/1D

Scan: 100/3D

Search: 200/4D

Focus: 3/4D+2

Fighters: 240

Transports: 10

Weapons:

20 Medium Laser Cannon Turrets

Scale: StarFighter

Fire Arc: 8 Front/Left, 8 Front/Right, 4 Back

Fire Control: 3D

Space: 1-5/15/30

Atmosphere Range: 100-500/1.5/3km

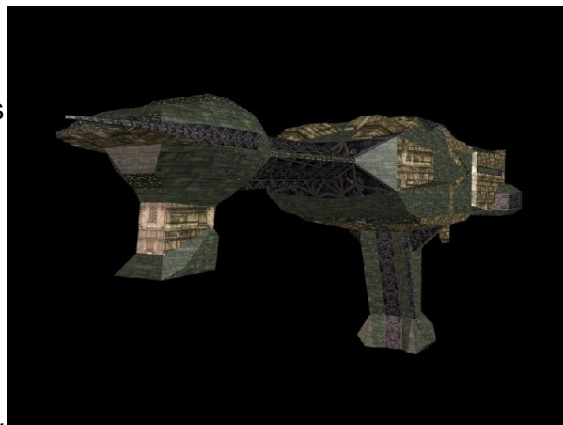
Damage: 5D

10 Heavy Laser Cannon Batteries

Scale: Capital

Fire Arc: 2 Front, 3 Left, 3 Right, 2 Back

Fire Control: 3D



Space: 1-5/15/30

Atmosphere Range: 100-500/1.5/3km

Damage: 5D

10 Concussion Missile Launchers (20 Missiles Magazine Each)

Scale: StarFighter

Fire Arc: 4 Front, 3 Left, 3 Right

Fire Control: 2D

Space: 1/3/7

Atmosphere Range: 50-100/300/700

Damage: 7D

10 Heavy Laser Cannon Turrets

Scale: StarFighter

Fire Arc: 2 Front, 3 Front/Left, 3 Front/Right, 2 Back

Fire Control: 3D

Space: 1-5/15/30

Atmosphere Range: 100-500/1.5/3km

Damage: 6D

7 TurboLaser Batteries

Scale: Capital

Fire Arc: 2 Front, 2 Left, 2 Right, 1 Back

Fire Control: 4D

Space: 3-15/36/75

Atmosphere Range: 6-30/36/150km

Damage: 6D

6 SuperLaser Cannons

Scale: Death Star

Fire Arc: Front

Fire Control: 4D

Space: 3-15/36/75

Atmosphere Range: 6-30/36/150km

Damage: 2D

Description: The GTVA Colossus resulted from an endeavor unprecedented in Terran or Vasudan history. This 6-kilometer-long behemoth is the result of 20 years of joint effort from dozens of contractors of both races. The Colossus is the most powerful space-faring warship ever made, bristling with over 80 weapon turrets. It also houses 60 fighter and bomber wings and requires a crew of over 30,000. The firepower of the Colossus is greater than that of most GTVA battle groups.

