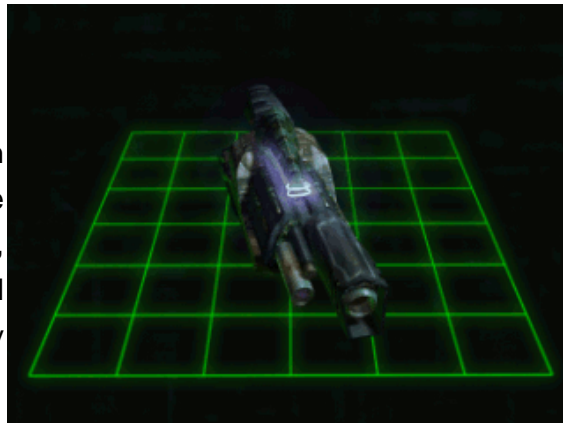


Starships D6 / GTW-83 Lamprey

GTW-83 Lamprey

The GTW-83 Lamprey cannon is a second-generation Leech gun. It drains the energy systems of its target, depleting the reserves available to the target's Primary weapons, shields, and engines. Coupled with a weapon that pummels both hull and shields, the Lamprey is highly effective against enemy fighters and bombers.



Model: GTW-83 Lamprey

Type: Anti Energy Blaster

Scale: Starfighter

Skill: Starship Gunnery

Cost: 8,000

Fire Rate: 1

Fire Control: 1D+2

Space Range: 1-3/5/9

Atmosphere Range: 100-300/500/900

Damage: 2D

Game Notes: Each hit from a Leech Cannon drains power from systems, roll 1D/6 on the following chart and apply the effects.

1/2 = Speed -1

3 = Manueverability -1d

4/5 = Sheilds -1d

6 = Energy Weapon Damage -1d

Page designed in Notepad, Logo`s done in Personal Paint on the Commodore Amiga

All text from Freespace 2, HTML and logos done by FreddyB

Images stolen from Freespace 2, copyright Volition.

Any complaints, writs for copyright abuse, etc should be addressed to the Webmaster [FreddyB](#).