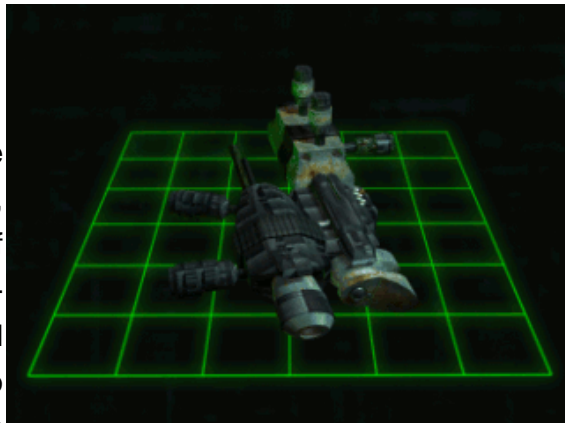


Starships D6 / GTW-5a Prometheus (re)

GTW-5a Prometheus (retrofit) Cannon

The GTW-5a Prometheus R is a modified version of the original Prometheus weapon. With the link to Earth severed, the GTVA had been unable to obtain sufficient quantities of argon (a required element in the Prometheus's power-generation module) to continue to manufacture the standard Prometheus. GTVA engineers modified the original design to incorporate some of the advanced electromagnetic mechanisms of the Banshee. The technology has not been perfected, however, and the Prometheus R suffers from a long recharge cycle and high energy requirements.



Model: GTW-5a Prometheus (retrofit) Cannon

Type: Blaster Cannon

Scale: Starfighter

Skill: Starship Gunnery

Cost: 4,250

Fire Rate: 1

Fire Control: 2D

Space Range: 1-3/5/9

Atmosphere Range: 50-300/500/900

Damage: 4D+2

Game Notes: Gains a bonus 1D damage if used against an unshielded target.

Page designed in Notepad, Logo's done in Personal Paint on the Commodore Amiga

All text from Freespace 2, HTML and logos done by FreddyB

Images stolen from Freespace 2, copyright Volition.

Any complaints, writs for copyright abuse, etc should be addressed to the Webmaster [FreddyB](#).