

Starships D6 / Earth Alliance/Earthforc

CREW SHUTTLE

Craft: Earth Alliance Crew Shuttle

Type: Multipurpose shuttlecraft transport

Scale: Starfighter

Dimensions:

-Length: 18.64m (depends on variant)

Skill: Space transports: Crew Shuttle

Crew: 2

-Skeleton: 1/+5

-Emergency Evac: 80/2 days

Crew Skill: Astrogation 3D, Sensors 4D, Space transports 3D

Passengers: 20

Cargo Capacity: 4,000 metric tons

Consumables: 1 week

Cost: Not available for sale

Hyperspace Jump Engines: No

Nav Computer: Yes

Maneuverability: 1D

Speed:

-Space: 4

-Atmosphere: N/A

Hull: 4D

Shields: N/A

Sensors:

-Passive: 25/1D

-Scan: 50/2D

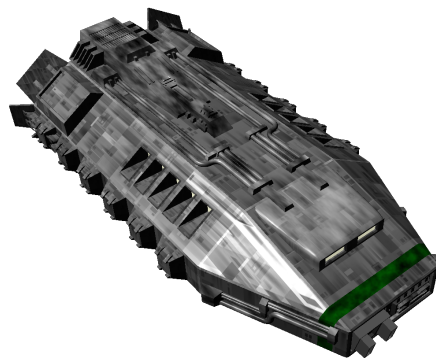
-Search: 75/3D

-Focus: 4/3D+2

AUXILIARY CRAFT CAPACITY: (Depends on variant)

WEAPONS: N/A (Depends on variant)

DESCRIPTION:



The Earth Alliance Crew Shuttle is utilized by nearly every Earth Alliance and Earthforce ship or outpost. It is versatile, simple and effective but incapable of entering a planetary atmosphere.

Variants

(It should be noted that the EA Crew Shuttle is easily modified to fulfill a very wide variety of roles as needed)

-Psi Corps variant: A larger variant of shuttle used by the Psi Corps capable of mounting up to four modified Starfury fighters underneath the main hull.

-Salvage One: A Salvage Shuttle type lives up to its namesake, being equipped for heavy salvage operations. This may include various grapple devices for gaining a hold on large items like starship hull fragments and cargo pods, as well as more powerful maneuvering thrusters to move such hefty items, extra cargo space for taking on various forms of debris and other salvage, and equipment for crew like spacesuits and other salvage related gear. These shuttles may have more consumables if expected to operate for extended periods of time in space.

Skydancer: This type was used by Jeffrey Sinclair's love interest (both of them). It served the purpose of long range exploration and planet surveys. These shuttles were equipped with extra fuel pods and power supplies, as well as extra space for consumables and oxygen, and a much better sensor package. They were meant to operate on their own for very long periods of time.

Known Ships

-Copernicus: In 2258, the Copernicus arrived at Babylon 5.

-Dyson: In 2260, the Dyson arrived at Babylon 5 as the vessel to dock with the station that day. A group of Vindrizi and their hosts were passengers on the vessel. When the Dyson departed the station, Duncan booked passage on the vessel.

-Newton: In 2262, the Newton was cleared to launch from Babylon 5.

-Shuttle 1: Shuttle 1 was the callsign of a Crew Shuttle assigned to Babylon 5. In 2258, the Shuttle 1 was piloted by Commander Jeffrey Sinclair during the evacuation of Babylon 4's skeleton crew. Chief Michael Garibaldi was his co-pilot. The shuttle was one of the last to leave Babylon 4 before the station disappeared, again.

In 2260, the Shuttle 1 brought Captain John Sheridan, Commander Susan Ivanova, and Marcus Cole to the White Star. The shuttle returned after the mission to Zagros VII. The shuttle ferried passengers to the station from the Asimov. The shuttle brought Ivanova and Ambassador Delenn to the White Star.

In 2261, the shuttle led a rescue effort for Michael Garibaldi, who was being held on a Psi Corps

transport. The shuttle was piloted by Zack Allan. The shuttle recovered a life pod holding Garibaldi. In 2262, the shuttle brought President John Sheridan and Delenn to Babylon 5.

-Shuttle 2: Shuttle 2 was the callsign of a Crew Shuttle assigned to Babylon 5. In 2258, the Shuttle 2 was used during the evacuation of Babylon 4's skeleton crew. In 2259, the shuttle ferried passengers from an Earth Alliance vessel to Babylon 5. Elizabeth Sheridan was a passenger on the vessel. In 2260, the shuttle brought John Sheridan, Ambassador Sinclair, and Marcus Cole to the White Star.

-Shuttle 3: Shuttle 3 was the callsign of a Crew Shuttle assigned to Babylon 5. In 2258, the Shuttle 3 was used during the evacuation of Babylon 4's skeleton crew in the first trip.

-Shuttle 7: Shuttle 7 was the call sign of a Crew Shuttle assigned to an Asimov class liner. In 2259, the shuttle ferried passengers from an liner to Babylon 5. Alfred Bester was a passenger on the vessel. Commander Susan Ivanova briefly considered destroying the vessel.

-Transport 11: Transport 11 was the callsign of a Crew Shuttle assigned to Babylon 5. In 2259, the shuttle was remotely piloted from Babylon 5 to test the Centauri Primus class battle cruiser that was blockading the station to see if they would fire on the vessel. The warship did not fire on the shuttle, and opened negotiations with the station.

OTHER INFO:

Affiliation: Earth Alliance

Class: Crew Shuttle

Length: Standard: 18.64m, Depends on variant

Crew: 2 pilots, several passengers

Jump Capable: No

Gravity: No

Weapons: None

Page designed in Notepad, Logo`s done in Personal Paint on the Commodore Amiga

All text, HTML and logos done by FreddyB

Images stolen from an unknown website at some remote time in the past.

Any complaints, writs for copyright abuse, etc should be addressed to the Webmaster [FreddyB](#).