

Name: Corellian Engineering Corporation Baleen-class heavy freighter

Scale: Capital

Length: 425.99 meters

Skill: Space Transports: Baleen-class heavy freighter

Crew: 6, Skeleton Crew: 2/+10

Crew Skill: Astrogation 4D+1, Space Transports 5D+2, Capital Ship Shields 4D+1, Sensors 5D

Passengers: 20

Cargo Capacity: 25000 Tons (mainly in external cargo containers)

Consumables: 6 Months

Cost: 2 Million (new), 0.5 Million (used)

Hyperdrive Multiplier: X2

Hyperdrive Backup: X12

Nav Computer: Yes

Maneuverability: 1D

Space: 3

Atmosphere: 150, 500kmh

Hull: 3D

Shields: 1D

Sensors:

Passive: 40/1D

Scan: 80/2D

Search: 100/3D

Focus: 4/4D

Weapons:

4 Tractor Beam Projectors

Fire Arc: 1 front, 1 left, 1 right, 1 back

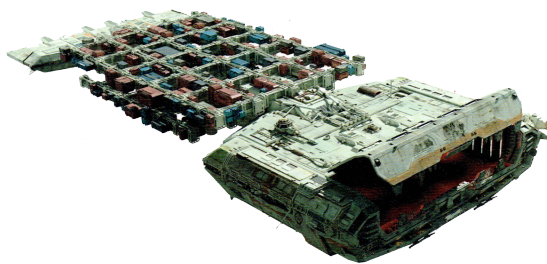
Skill: Capital Ship Gunnery

Fire Control: 2D

Space Range: 1-5/15/30

Atmosphere Range: 2-10/30/60km

Damage: 3D



Description: Baleen-class heavy freighter was a bulk freighter model used to move huge amounts of cargo. Baleen-class freighters were about 400 meters long and were quite clumsy, but were capable of moving large amounts of cargo across the galaxy every day, and consequently, were essential to commerce. Their forward compartment could be opened in transit and used to salvage items found drifting in space, even entire starships. Built in orbital shipyards, ships of the class were designed to never enter a planet's atmosphere, instead they were docked at space stations and transfer yards to load

and unload cargo.

One such freighter was the Eravana, Han Solo and Chewbacca's ship after the loss of the Millennium Falcon.

---

Stats by FreddyB, Descriptive Text from WookieePedia

Image copyright LucasArts

Any complaints, writs for copyright abuse, etc should be addressed to the Webmaster [FreddyB](#).