

Vehicles D6 / Kuat Drive Yards 20-T R

Model: Kuat Drive Yards 20-T Railcrawler conveyex transport

Type: Repulsorlift train

Scale: Walker

Length: 230.2 meters

Skill: Repulsorlift operation: repulsorlift

Crew: 2

Crew Skill: Repulsorlift operation 4D+2

Passngers: 20 (usually carries guards)

Cargo Capacity: 500 tonnes

Cover: Full

Altitude Range: Ground (on raised track)

Maneuverability: 0D

Move: 32; 90 kmh

Body Strength: 4D+1

Weapons:

1 Twinlaser-Turret

Fire Arc: Turret

Crew: 1

Skill: Vehicle blasters

Fire Control: 1D+2

Range: 25-100/500/1 km

Damage: 5D

2 Twinlaser-cannons (firelinked)

Fire Arc: Front

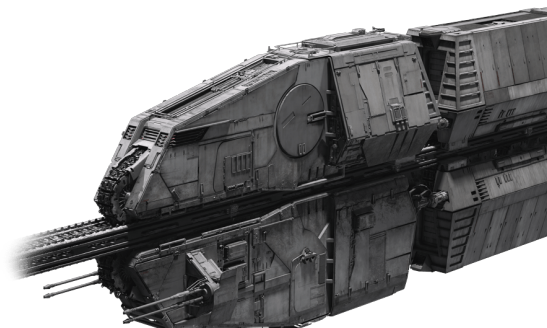
Crew: 1

Skill: Vehicle Blasters

Fire Control: 1D

Range: 50-250/750/1.5 km

Damage: 7D



Description: The 20-T Railcrawler conveyex transport, the railcar known as ATD-C45, or simply conveyex, was a model of heavily armored cargo train manufactured by Kuat Drive Yards. It saw action during the reign of the Galactic Empire. During this time, a conveyex on the planet Vandor-1 was carrying freight, that Han Solo sought to steal in order to prove his skills.

For rapid transport of special cargo across surface distances on frontier worlds, the Empire used heavily

armored conveyex vehicles that could travel along rails winding through treacherous terrains.

It had several high security containers that were only accessable with code cards. For example the container ICC-5537 once carried 400 kilogramms of coaxium.They were sometimes guarded by rangetroopers to protect valuable freight.

Page designed in Notepad, Logo`s done in Personal Paint on the Commodore Amiga

All text, HTML and logos done by FreddyB

Images stolen from an unknown website at some remote time in the past.

Any complaints, writs for copyright abuse, etc should be addressed to the Webmaster [FreddyB](#).