

Starships D6 / Sienar Fleet Systems IF

Name: Sienar Fleet Systems IF-120 landing craft

Scale: Starfighter

Length: 65 Meters

Cost: 290,000 credits

Skill: Space Transports; IF-120 landing craft

Crew: 8, gunners 6, skeleton 2/+10

Passengers: 120

Crew Skill: Space Transports 5D, Starship Gunnery 4D+2, Starship Shields 4D

Consumables: 6 Months

Cargo Capacity: 130 tons

Hyperdrive Multiplier: X1

Hyperdrive Backup: X12

Nav Computer: Yes

Space: 4

Atmosphere: 250;800kmh

Maneuverability: 0D

Hull: 4D

Shields: 2D+2

Sensors:

Passive: 80/0D

Scan: 160/2D

Search: 640/3D

Focus: 5/3D+2

Complement:

12 speeder bikes

2 LAVr QH-7 Chariot

1 PX-4 Mobile Command Base

Weapons:

2 * Double medium laser cannons

Fire Arc: 1 Front, 1 Back

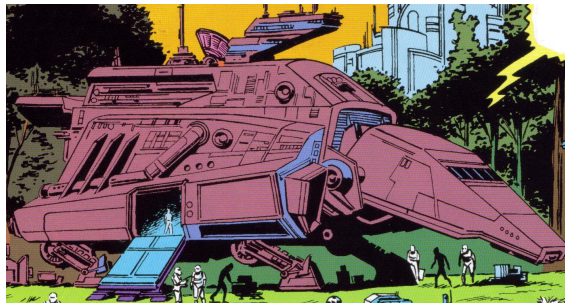
Crew: 1 each

Fire Control: 2D

Space: 1-3/12/25

Atmosphere Range: 100-300/1.2/2.5km

Damage: 5D



4 * antipersonnel heavy blaster cannons

Fire Arc: Turrets

Crew: 1 each

Fire Control: 1D

Space: 1-2/5/15

Atmosphere Range: 50-100/500/1.5km

Damage: 5D

Description: The IF-120 landing craft, also known as Imperial Landing Force ship was an Imperial starship designed by Sienar Fleet Systems for shuttling troops to a planet and supporting them.

The IF-120 was based on the Lambda-class and Sentinel-class shuttles; but instead of having those models' folding wings, it had repulsors for stability. It had a much larger capacity and was bulkier than other landing craft, and possessed extensive communications and sensor systems.

After landing and deploying its troops and vehicles, the IF-120's interior could convert from transport configuration into a fully-functional mobile command base until the area was secured for larger and more permanent command facilities.

A landing craft was captained by Drezzel, an Imperial assigned to explore the Seoul system. This ship was still under Drezzel's command following the Battle of Endor and Emperor Palpatine's death. Drezzel continued to serve the Empire under an Imperial Governor. However, the ship and Drezzel were destroyed during an accident involving the native Seouliarian crystals.

Stats by FreddyB, descriptive text from WookieePedia

Image copyright LucasArts.

Any complaints, writs for copyright abuse, etc should be addressed to the Webmaster [FreddyB](#).